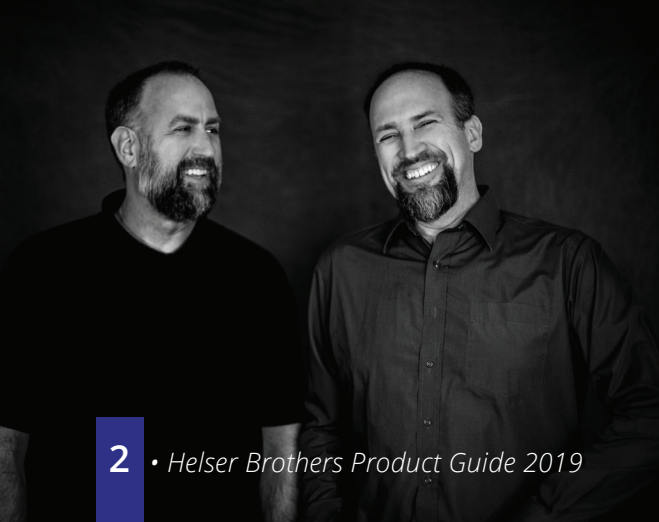


HELSE**R** BROTHERS

.....

PRODUCT CATALOG

Volume XXIII



**23 YEARS AGO,** Jay Helser was a popular drapery installer in the Phoenix area, well known for his knowledge, skill, and dedicated service. In his effort to solve his clients' various needs, he found himself consistently dealing with poor quality products and multiple suppliers. Clearly a desperate need existed for a manufacturer and supplier of quality drapery hardware — one that could be counted upon to provide solutions quickly and with excellent customer service. Jay decided he would be the one to do it.

Jay joined forces with his brother Mark, a talented metal worker, and Helser Brothers, Inc. was born in 1996 in a small 900 square foot workshop in Arizona, serving designers and workrooms in the area. Through Jay's extensive experience in the industry and zeal for customer service and Mark's innate skill in metal manufacturing, their tiny workroom grew into a 19,000 square foot facility by 2003.

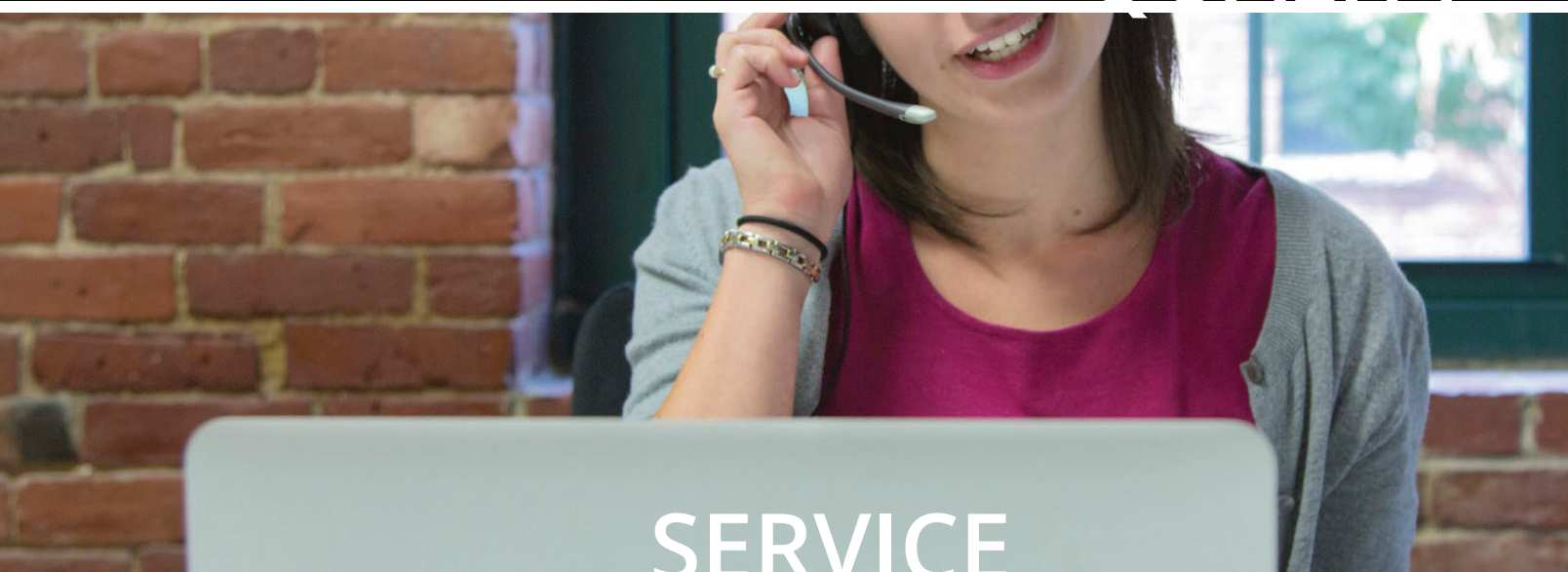
Now, in 2019, Helser Brothers, Inc. serves designers and drapery workrooms across the United States and Canada, offering hundreds of high-quality products and custom work to thousands of clients. Even 23 years later, the brothers are still going strong. Mark continues to design new and innovative hardware while Jay focuses on unwavering customer service, produces marketing content, and interacts regularly with our client base through social media. Their dedication to their craft and clients is what made Helser Brothers, Inc. a beloved and respected member of the interior design community.



# HELSE**R** BROTHE**R**S VALU**E**S



QUALITY



SERVICE



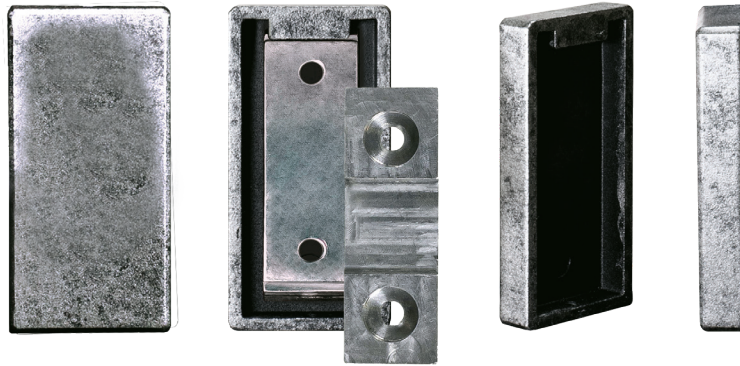
INGENUITY



NEW IN 2019...

## EZ MOUNT BASE PLATES

This revolutionary new base plate is sleek and installs in a snap thanks to its unique mounting design, which boasts no visible screw holes. Just install the separate backplate to the mounting point on the wall and clip the base plate onto it when ready. Secure with a tiny screw in the base (that disappears from view once installed) and you are good to go! It's an installer's savior and a homeowner's dream.



## EZ MOUNT FRENCH POLES

We have added the EZ Mount base plate to our 5/8" - 1 1/4" Curved and Mitered French Poles. Gone are the days of struggling to align your base plates. Now is the time of ease and refinement, with half the trouble and twice the class. Let the people have their cake and eat it, too.



Check them out on pages 54 & 55



## EZ MOUNT BRACKETS

Our French Poles weren't the only ones to get the EZ Mount makeover. We have also added a chic new bracket to both Artigiani and Metro, just to give our clients the best of both worlds. The new EZ Mount base plate, as well as a cylindrical arm and screw-less saddle, gives the EZ Mount Bracket a clean and contemporary look. It's not just a center support; it's a centerpiece.

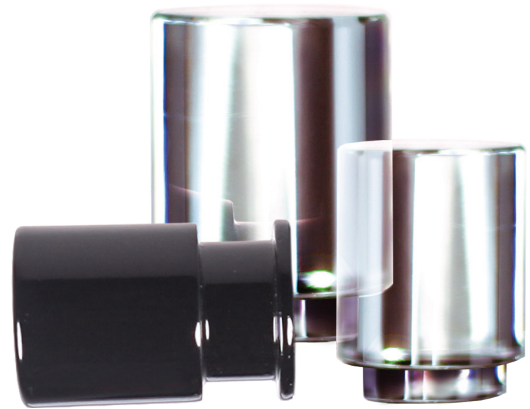
Check them out on pages 32, 57, & 88





## BAUHAUS & GRANT FINIALS

These low-profile finials are now available in both our Artigiani and Metro lines. Bauhaus, our new crystal finial, is available in both 7/8" and 1 1/4" sizes, while Grant, a client inspired iron finial, has a handy groove for a drop-ring. All three fit snugly into the rod and do not require collars!



Check them out on pages 22 & 86

## NEW FINISHES

**Leather**, a rich mahogany brown exuding both natural beauty and high class civility.

**Cool Steel**, a brushed steel gray just as at home in a barn loft as the CEO's office.

**Riviera**, a weathered brass reminiscent of ornate balconies overlooking the French seaside.

**Gunmetal**, a deep steel gray with an understated masculine air, but a satiny finish for a feminine touch.

**Ivory Coast**, a mouthwatering speckled cream that invokes thoughts of summer.



Check them out on page 8

QUALITY IS PRIDE OF WORKMANSHIP.

- W. Edwards Deming

**FINISHES** • 8 - 9

**ARTÉFICE** • 10 - 17

**ARTIGIANI** • 18 - 39

**CATALINA** • 40 - 49

**FRENCH POLES** • 50 - 59



# HARDWARE

ISABELLA • 60 - 69

JACKIE VON TOBEL • 70 - 81

METRO • 82 - 89

ROMAN BLINDS • 90 - 99

TRAVERSE RODS • 100 - 111

TRACK & MOTORIZATION • 112 - 129

ACKNOWLEDGMENTS • 130 - 131

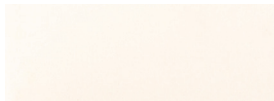




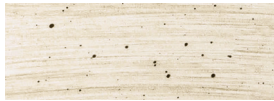
# HELSEBROTHERS FINISHES

From subtle and sophisticated to elegant and eye-catching, our high-quality artisanal finishes are made to please.

## METAL FINISHES



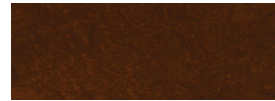
M-316 • Alabaster  
(Outdoor Approved)



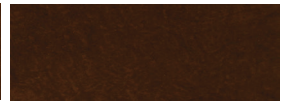
M-320 • Ivory Coast  
(Premium)



M-319 • Leather  
(Premium)



M-023 • Rustic  
(Outdoor Approved)



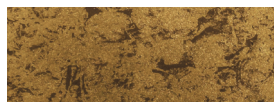
M-025 • Earth  
(Outdoor Approved)



M-022 • Canyon  
(Outdoor Approved)



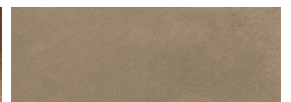
M-024 • Manchester



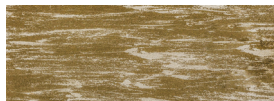
M-027 • Crown



M-300 • Asti  
(Premium)



M-301 • Oyster Shell  
(Premium)



M-310 • French Quarter  
(Premium)



M-322 • Grecian Brass  
(Premium)



M-315 • Roman Coin  
(Premium)



M-311 • Vintage Brass



M-308 • Monument Bronze



M-321 • Riviera  
(Premium)



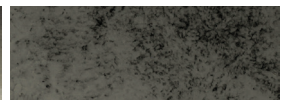
M-309 • Heirloom  
(Premium)



M-306 • Pewter  
(Premium)



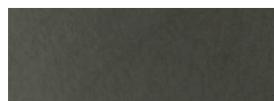
M-314 • Liquid Silver



M-026 • Frost



M-021 • Forge  
(Outdoor Approved)



M-317 • Gunmetal



M-318 • Cool Steel  
(Premium)



M-020 • Coal  
(Outdoor Approved)

### OUTDOOR FINISHES:

Catalina Outdoor products are coated in a zinc base coat\* suitable for use outdoors. Select finishes (listed above as "Outdoor Approved") may be used with this base coat without a reduction in effectiveness. Non-Outdoor approved finishes are not covered by the 5-year Catalina warranty.

### PREMIUM FINISHES:

Our Premium Finishes require extended dry times and/or multiple coats. This will result in a 10% upcharge to the finished products and certain finishes may increase the 3-day rush lead time.

**\*Note:** a zinc undercoat may be added to any metal product, but will not benefit from the 5-year Catalina warranty.

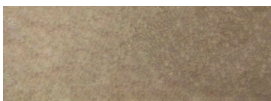




## WOOD FINISHES



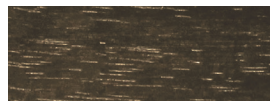
W-309 • Heirloom  
(Premium)



W-301 • Oyster Shell  
(Premium)



W-310 • French Quarter  
(Premium)



W-311 • Vintage Brass



W-308 • Monument Bronze



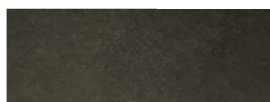
W-076 • Black Forest



W-321 • Riviera  
(Premium)



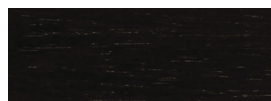
W-306 • Pewter  
(Premium)



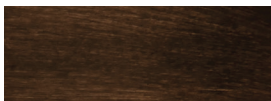
W-317 • Gunmetal



W-318 • Cool Steel  
(Premium)



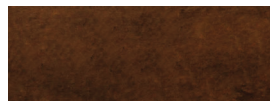
W-020 • Coal



W-072 • English Walnut



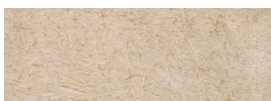
W-070 • Normandy Cherry



W-319 • Leather  
(Premium)



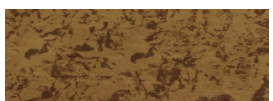
W-320 • Ivory Coast  
(Premium)



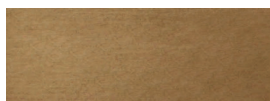
W-077 • Chelsea Bisque



W-078 • Loire Champagne



W-075 • Aged Florentine



W-079 • Orleans Gold



W-300 • Asti  
(Premium)



W-073 • Swiss Caramel

## METRO FINISHES



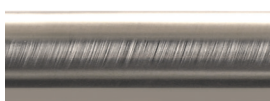
019 • Gloss Black



015 • Gloss White



018 • Chrome



016 • Brushed Nickel



017 • Soft Brass\*

Gloss Black and Gloss White can be used on any HB painted metal product.

\* Soft Brass is not available for the 1 1/8" traverse or decorative motorized assemblies.

# FORGED

/ fôrjd /

*Adjective*

.....

**Def:** formed or made, especially  
through concentrated effort





# 1 • ARTÉFICE







Artéfice is the perfect partnership of the minimalism of contemporary design and the ancient art of metal work, with textures reflecting the raw beauty of the forge and timeless elements of nature.

.....

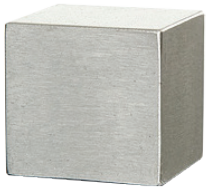
## C

# ONTENTS

Chapter Cover	• 10
Contents	• 12
Finials	• 14
Rings	• 14
Rods	• 15
Wands	• 15
Bracket Bases	• 16
Bracket Saddles	• 16
Base Plate Textures	• 17
Tab Posts	• 17

# FINIALS & RINGS

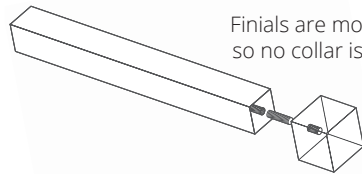
## FINIALS



**Cube Finial**  
100201 • 1 1/4" x 1 1/4"



**Cylinder Finial**  
100202 • 1 1/4" x 1 1/4"

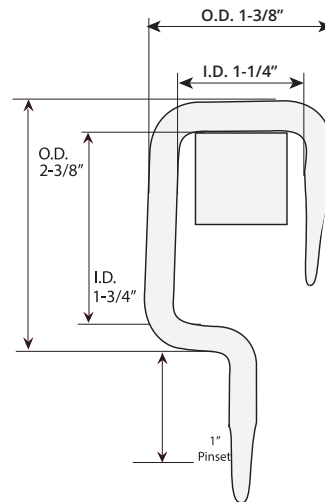


Finials are mounted flush so no collar is necessary.

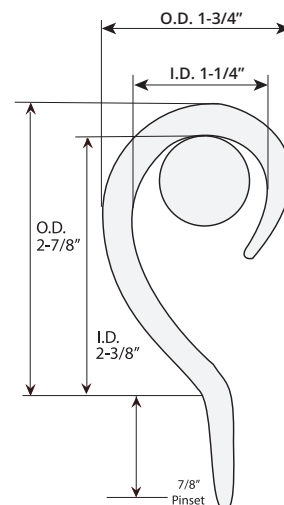
## RINGS



**Square Open Ring**  
100401 • I.D. 1 1/4" x 1 3/4" • O.D. 1 3/8" x 2 3/8"



**Square Open Ring**  
100402 • I.D. 1 1/4" x 2 3/8" • O.D. 1 3/4" x 2 7/8"





# RODS & WANDS

## RODS



### 7/8" Solid Square Rod

100101 • 73" (Light & Heavy) Bracket to Bracket Maximum

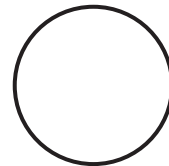


Actual Size



### 7/8" Solid Round Rod

100102 • 73" (Light & Heavy) Bracket to Bracket Maximum



Actual Size

### Bracket to Bracket Maximum

The Bracket to Bracket maximum is the maximum distance in inches between brackets before an additional bracket must be added to avoid unwanted bowing or sagging. The maximum depends on the weight of the treatment fabric and the rod diameter. Some rods have the same maximum regardless of fabric weight.

**Light Treatments** include unlined, sheer, and lightweight fabric  
**Heavy Treatments** include lined, blackout, or upholstery fabric

## WANDS

### Fiberglass Wands

Available in White

36", 48", 60", 72", & 84"



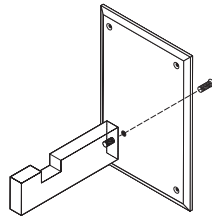
# ARTÉFICE BRACKETS & TAB POSTS

## BASE PLATE



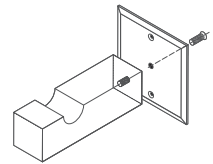
### Large Bracket Base Plate

Shown in Linea - Horizontal (Left) & Luna (Right)  
100301 • 6" x 4" • 1/4" Thick



### Small Bracket Base Plate

Shown in Lava  
100302 • 3" x 3" • 1/4" Thick



## CUBE SADDLE ARM



### Square Cut

100310 • 2 1/2" Clearance  
100312 • Custom Clearance up to 5 1/2"



### Round Cut

100311 • 2 1/2" Clearance  
100313 • Custom Clearance up to 5 1/2"

## BEAM SADDLE ARM



### Square Cut

100314 • 2 1/2" Clearance  
100316 • Custom Clearance up to 5 1/2"



### Round Cut

100315 • 2 1/2" Clearance  
100317 • Custom Clearance up to 5 1/2"

Artéficie Bypass Brackets and Rings are available for Square Rods!



Our Artéifice brackets come in a variety of configurations, textures, and styles – all custom made to order.

## BASE PLATE CONFIGURATIONS & TEXTURES

	1	2	3	4
A				
B				
C				

Choose from a dozen configuration options (see left) or design your own!

Configurations options are only used for Large Bracket Base Plates.

Small Bracket Base Plates are Center Mounted as standard.

## BASE PLATE TEXTURES



030 • Lava



031 • Luna



032 • Linea • Horizontal (L) & Vertical (R) Striations

## TAB POSTS



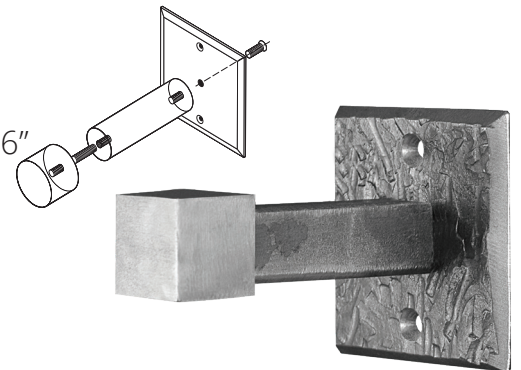
### Cube Post

- 100601 • 3" Clearance
- 100603 • Custom between 3"- 6"



### Cylinder Post

- 100602 • 3" Clearance
- 100604 • Custom between 3"- 6"







## 2 • ARTIGIANI



# AR•TI•SAN

/ `ärdəzən /

*Adjective*

.....

**Def:** skilled in a particular art or craft

Allow your inner craftsman to shine through with endless combinations of timeless iron hardware. Finish it off with one of our gorgeous artisanal finishes for a one-of-a-kind design.

.....

## C

# ONTENTS

Chapter Cover	• 18
Contents	• 20
Finials	• 22
End-Caps & Collars	• 25
Rods	• 26
Customization	• 28
Elbows	• 29
Swing Arms	• 29
Brackets	• 30
Rings	• 34
Wands	• 35
Medallions	• 36
Bases	• 37
Tiebacks	• 39







# ARTIGIANI FINIALS

Finials are shown at 25% scale for reference purposes.

Low-Profile collars are factored into the price of each finial. Cap-Style collars are available upon request (see page 25).



## Aerie Finial

Shown in Coal  
040265 • 2 3/4" x 1 5/8"



## Arroyo Finial

Shown in Liquid Silver  
040263 • 3" x 2"



## Bauhaus Finial

Shown in Monument Bronze & Asti  
040274 • 1 1/4" x 7/8"  
040275 • 1 1/2" x 1 1/4"



## Brilliance Finial

Shown in Roman Coin  
040268 • 3 3/8" x 2 3/8"



## Cadre Finial

Shown in Heirloom  
040256 • 2 1/8" x 1 7/8"



## Cannonball w/ Fluted Base

Shown in Riviera  
040243 • 2 1/4" x 1 1/2"



## Cannonball Finial

Shown in Coal, Alabaster,  
Roman Coin, & Liquid Silver  
040255 • 1" x 1"  
040201 • 2" x 2"  
040219 • 3" x 3"



## Chrysanthemum

Shown in Grecian Brass  
040205 • 4 1/2" x 8"



## Circe

Shown in Liquid Silver  
040266 • 2 1/2" x 2 1/2"





### Clock Key

Shown in Alabaster  
040242 • 4 1/2" x 4"



### Cyclone

Shown in Forge & Crown  
040216 • 5 1/2" x 3" • Small  
040209 • 6 3/4" x 3 3/4" • Large



### Dew Drop

Shown in Riviera  
040276 • 3 1/2" x 4 1/4"



### Equinox

Shown in Coal  
040220 • 3 1/2" x 4 1/4"



### Facets

Base shown in Vintage Brass  
040271 • 2 7/8" x 2 3/8"



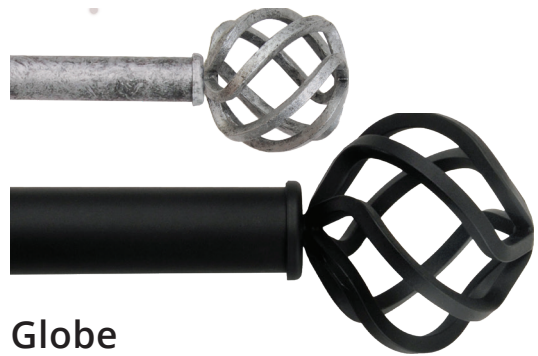
### Fitz

Shown in Oyster Shell  
040257 • 2 3/8" x 2"



### Fleur De Lis

Shown in Crown  
040215 • 5" x 3 3/4"



### Globe

Shown in Frost & Coal  
040233 • 3" x 3" • Small  
040227 • 5" x 5" • Large



### Grant

Shown in Gloss Black  
040277 • 1 3/8" x 7/8"



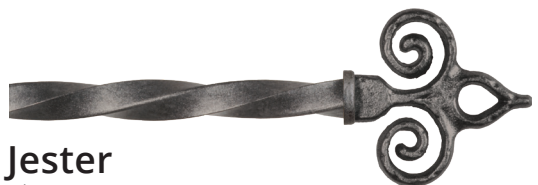
### Halberd

Shown in Pewter  
040231 • 6 3/4" x 4 1/4"



### Isen

Shown in Roman Coin  
040259 • 3" x 2"



### Jester

Shown in Forge  
040237 • 3 3/4" x 3 5/8"



**Marquesa**  
Base shown in Riviera  
040269 • 3 3/8" x 2 3/4"



**Platz**  
Shown in Liquid Silver  
040273 • 2 3/4" x 2 3/4"



**Oakwood**  
Shown in Manchester  
040208 • 5 1/8" x 4 1/8"



**Pyramid**  
Shown in Cool Steel  
040272 • 2 3/4" x 2 3/4"



**Pacha**  
Shown in Monument Bronze  
040260 • 2 1/4" x 2 7/8"



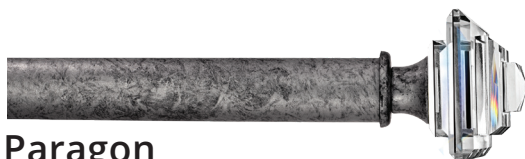
**Sophia**  
Shown in Monument Bronze  
040202 • 8" x 8 3/4"



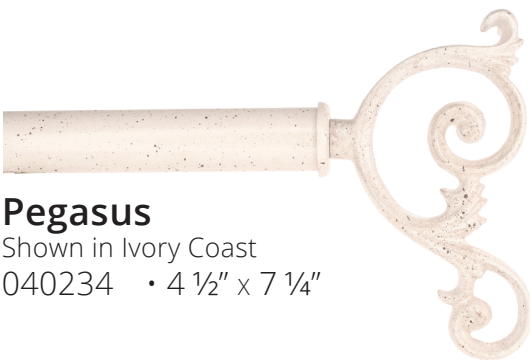
**Panier**  
Shown in Gunmetal  
040262 • 3 1/2" x 2 5/8"



**Swaying Leaf**  
Shown in Asti  
040207 • 7 1/2" x 5"



**Paragon**  
Base shown in Frost  
040267 • 2 3/8" x 2 3/4"



**Pegasus**  
Shown in Ivory Coast  
040234 • 4 1/2" x 7 1/4"



**Totem**  
Shown in Leather  
040240 • 6 3/8" x 5"





**Triple Scroll**

Shown in Canyon & Vintage Brass  
 040204 • 6 3/4" x 4 7/8" • Small  
 040241 • 8" x 6 1/2" • Large



**Venetian**

Shown in Alabaster  
 040210 • 6" x 6"



**Ziggurat**

Shown in Burnished Brass  
 040258 • 2 1/8" x 2 1/8"

**END-CAPS & COLLARS**



Collars are supplied with and included in the price of all finials, but may be purchased separately if desired.

End-caps and collars come in two styles, Low-Profile (left) and Cap-Style (right). Low-Profile is the default collar option. Cap-Style collars must be requested.



**LOW-PROFILE**



**Low-Profile Collars & End-Caps**

Shown in Vintage Brass  
 Available in 5/8", 7/8", 1", 1 1/4", 1 3/4", 2", & 2 3/4"

7/8" Square collars and end-caps are available



**CAP-STYLE**



**Cap-Style Collars & End-Caps**

Shown in Forge  
 Available in 5/8", 7/8", 1 1/4", 1 3/4", & 2"

2" and 2 3/4" end-caps/collars can be used with our Isabella wood rods.

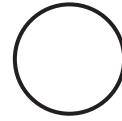
# ARTIGIANI RODS



## 5/8" Round Rod

Shown in Vintage Brass

040109 • 48" (Heavy) & 64" (Light) Bracket to Bracket Maximum



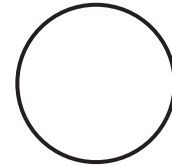
Actual Size



## 7/8" Round Rod

Shown in Liquid Silver

040105 • 63" (Heavy) & 73" (Light) Bracket to Bracket Maximum



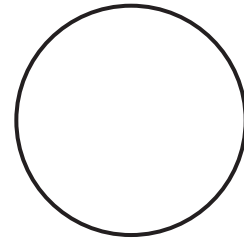
Actual Size



## 1 1/4" Round Rod

Shown in Crown

040106 • 78" (Heavy) & 90" (Light) Bracket to Bracket Maximum



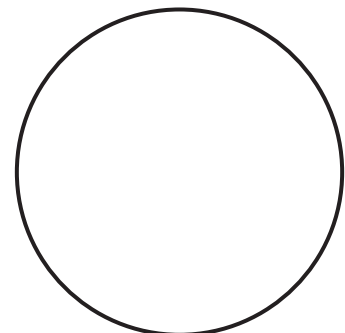
Actual Size



## 1 3/4" Round Rod

Shown in Monument Bronze

040107 • 108" (Heavy) & 120" (Light) Bracket to Bracket Maximum



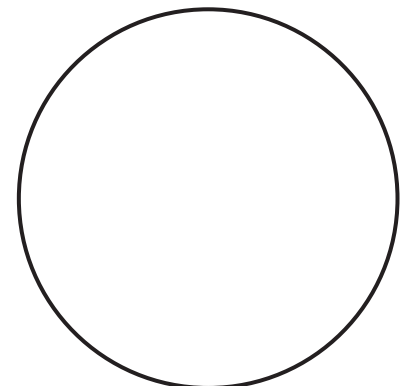
Actual Size



## 2" Round Rod

Shown in Pewter

040110 • 140" (Heavy) & 160" (Light) Bracket to Bracket Maximum



Actual Size

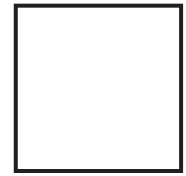




### 7/8" Square Rod

Shown in Roman Coin

040116 • 85" (Heavy) & 100" (Light) Bracket to Bracket Maximum



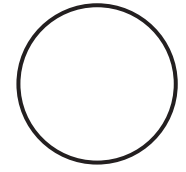
Actual Size



### 7/8" Hammered Round Rod (Solid Iron)

Shown in Forge

040108 • 63" (Heavy) & 73" (Light) Bracket to Bracket Maximum



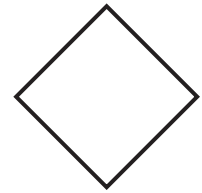
Actual Size



### 3/4" Square Twisted Rod (Solid Iron)

Shown in Frost

040104 • 59" (Heavy) & 68" (Light) Bracket to Bracket Maximum



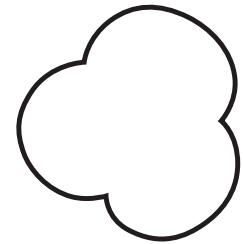
Actual Size



### 1 1/4" Twisted Iron Rope

Shown in Manchester

040102 • 50" (Heavy) & 56" (Light) Bracket to Bracket Maximum



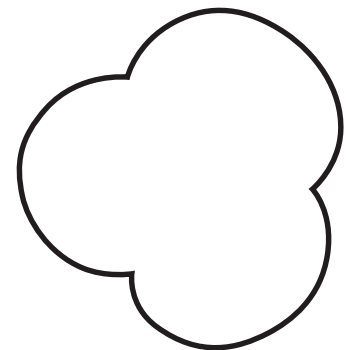
Actual Size



### 1 3/4" Twisted Iron Rope

Shown in Coal

040103 • 90" (Heavy) & 95" (Light) Bracket to Bracket Maximum



Actual Size

#### Bracket to Bracket Maximum

The Bracket to Bracket maximum is the maximum distance in inches between brackets before an additional bracket must be added to avoid unwanted bowing or sagging. The maximum depends on the weight of the treatment fabric and the rod diameter. Some rods have the same maximum regardless of fabric weight.

**Light Treatments** include unlined, sheer, and lightweight fabric

**Heavy Treatments** include lined, blackout, or upholstery fabric

# ROD CUSTOMIZATION

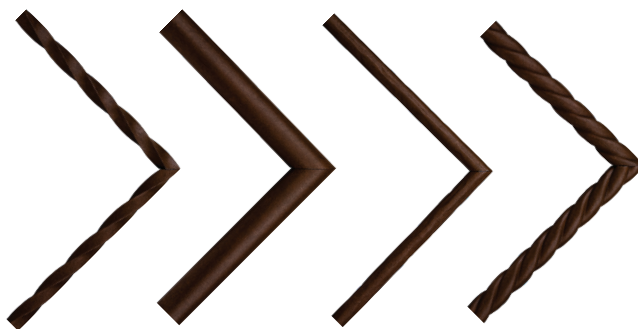
At Helser Brothers, we take pride in our work. Not only do we produce quality products, but we go above and beyond to make yours unique through a variety of customization options.

## MITERED RODS

Unlike elbows, miter cuts can be used with any of our rods, at no extra cost!

Due to the twist in the rod, Hollow Rope rods and Twisted Solid rods will not match up at point of miter.

Welded-on rings require an upcharge.



## BOWED & ARCHED RODS

Most of our rods can be bowed to match your exact template.

We require a quote and a template before ordering any bowed rods. See pages 12 & 91 of your Price Guide for information.

Welded-on rings require an upcharge.

## CUSTOM DESIGNS

Helser Brothers' rods, such as this beautiful custom "Branch Rod," offer our customers the opportunity to make their drapery dreams come true.





# ELBOWS & SWING ARMS

## ELBOWS



### 90° Elbow

Shown in Coal & Forge  
 040923 • 7/8" Round  
 040924 • 1 1/4" Round  
 040951 • 2" Round



### 135° Elbow

Shown in Coal & Forge  
 040926 • 7/8" Round  
 040925 • 1 1/4" Round



### Adjustable Elbow

Shown in Coal & Forge  
 040932 • 7/8" Round  
 040933 • 1 1/4" Round  
 040934 • 1 3/4" Round

Only our hollow round rods can be used with elbow splices.

## SWING ARMS



### Rustic Style Swing Arm

Shown with a 5/8" Round rod & a  
 1" Cannonball finial in Monument Bronze  
 451410A • 5/8" Round  
 451410B • 7/8" Round  
 451410C • 3/4" Twisted Square  
 2 3/8" x 8 1/4" Base plate w/ 1/2" Clearance\*



### Artigiani Style Swing Arm

Shown with a 3/4" Twisted Square rod &  
 a Fleur de Lis finial in French Quarter  
 451409 • 5/8", 7/8", 1 1/4" Round or 3/4" Twisted  
 2 1/2" x 4 1/2" Base plate w/ 2 5/8" Clearance\*



### Swing Arm Support Bracket

Available with custom clearances only  
 0403145 • 7/8" Round



### Mitered Simple Style Swing Arm

Shown with a 7/8" Round rod &  
 a 1" Cannonball finial in Coal  
 451411 • 7/8" or 1 1/4" Round  
 3" x 6" Base plate w/ 3/8" Clearance\*

\* Custom Clearances can be requested

# ARTIGIANI BRACKETS

Helser Brothers has the widest bracket-to-bracket maximums in the industry, coupled with high-quality, heavy-duty iron brackets. That means less brackets are needed without sacrificing stability, even on wide expanses.

## STRAP STYLE



### Strap Bracket

Available with both standard and custom clearances

0403155	• 7/8" Square	• 2 7/8" Clearance
0403114	• 7/8" Petite	• Custom Clearance
040317	• 7/8" Round	• 2 7/8" Clearance
040318	• 1 1/4" Round	• 2 7/8" Clearance
040319	• 1 3/4" Round	• 3 3/8" Clearance
040349	• 2" Round	• 3 1/8" Clearance



Bypass options available



### Horizontal Mount Strap Bracket

Available with custom clearances only

040344	• 5/8" Petite
0403152	• 7/8" Square
040345	• 7/8" Petite
040340	• 7/8" Round
040341	• 1 1/4" Round
040342	• 1 3/4" Round
040373	• 2" Round



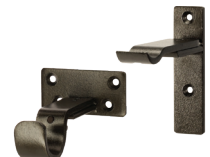
Bypass options available for select sizes



### Adjustable Strap Bracket

Available with multiple adjustable clearances

0403148 A, B OR D	• 7/8" Square
040366 A, B OR D	• 7/8" Round
040367 A, B OR D	• 1 1/4" Round
040368 A, B OR D	• 1 3/4" Round
040369 A, B OR D	• 2" Round



Horizontal base plates & bypass options available





Vertical Bases  
also available!

## Adjustable Sleek Bypass Bracket

Available with adjustable clearances only

- 0403142 • 7/8" Round • 3" - 4" Clearance
- 0403163 • 7/8" Round • 4" - 5" or 5" - 6" Clearance
- 0403143 • 1 1/4" Round • 3" - 4" Clearance
- 0403164 • 1 1/4" Round • 4" - 5" or 5" - 6" Clearance



## Arm-at-Top Strap Bracket

Available with custom clearances only

- 0403116 • 5/8" Petite
- 0403115 • 7/8" Petite
- 0403144 • 7/8" Round



Bypass  
options  
available  
for select  
sizes



## Tapestry Bracket

Available with standard clearances only

- 0403117 • 7/8" Round • 3/8" Clearance
- 0403118 • 1 1/4" Round • 3/8" Clearance



## Ceiling Mount Strap Bracket

Available with custom drops only

- 0403153 • 7/8" Square
- 040337 • 7/8" Round
- 040338 • 1 1/4" Round
- 040339 • 1 3/4" Round
- 040372 • 2" Round



Bypass  
options  
available



## Double Strap Bracket

Available with custom clearances only

- 0403149 • 7/8" & 7/8" Square
- 040320 • 7/8" & 7/8" Round
- 040321 • 7/8" & 1 1/4" Round
- 040322 • 7/8" & 1 3/4" Round
- 040323 • 1 1/4" & 1 1/4" Round
- 040324 • 1 1/4" & 1 3/4" Round
- 040325 • 1 3/4" & 1 3/4" Round



Bypass  
options  
available  
for select  
sizes

## MODERN STYLE



### EZ Mount Bracket

Available with standard clearances only

0403161 • 7/8" Round • 4" Clearance

0403162 • 1 1/4" Round • 3 7/8" Clearance

Clearances include thickness of base plate



### Brooklyn Bracket

Available with standard clearances only

0403126 • 5/8" Petite • 2 7/8" Clearance

0403127 • 7/8" Round • 2 7/8" Clearance

0403128 • 1 1/4" Round • 2 7/8" Clearance

0403129 • 1 3/4" Round • 3 1/8" Clearance

0403130 • 2" Round • 3 1/8" Clearance



### Double Brooklyn Bracket

Available with standard clearances only

0403131 • 7/8" & 7/8" Round • 2" & 4 1/2" Clearance

0403132 • 1 1/4" & 1 1/4" Round • 2" & 5 1/2" Clearance

0403133 • 1 3/4" & 1 3/4" Round • 2" & 6 1/4" Clearance



### Contemporary Bracket

Available with standard clearances only

040360 • 5/8" Petite • 2 7/8" Clearance

040361 • 7/8" Round • 2 3/4" Clearance

## INSIDE MOUNT STYLE



### Enclosed Inside Mount Bracket

Requires rod length deductions

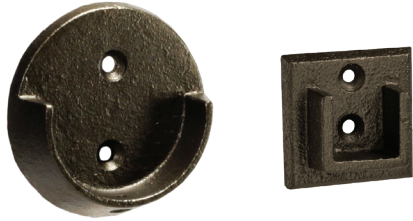
0403109 • 5/8" Petite

0403110 • 7/8" Round

0403111 • 1 1/4" Round

0403112 • 1 3/4" Round





### Inside Mount Bracket

Requires rod length deductions

0403103 • 7/8" Square

0403108 • 2" Round



### Sash Bracket

Requires rod length deductions

0403125 • 5/8" Petite

## ARTIGIANI STYLE



### Artigiani Bracket

Available with standard clearances only

040310 • 7/8" Round • 2 7/8" Clearance

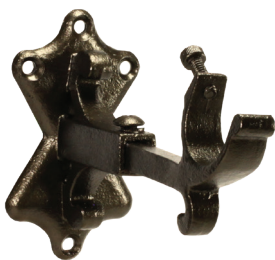
040311 • 1 1/4" Round • 2 7/8" Clearance

040312 • 1 3/4" Round • 3" Clearance

040305 • 2" Round • 2 7/8" Clearance



Bypass options available



### Artigiani Adjustable Bracket

Available with multiple adjustable clearances

040306 A, B OR D • 7/8" Round

040307 A, B OR D • 1 1/4" Round

040308 A, B OR D • 1 3/4" Round

040370 A, B OR D • 2" Round



Bypass options available



### Artigiani Scroll Bracket

Available with standard clearances only

040313 • 2 7/8" Clearance

For 7/8" & 1 1/4" Round rods

Scroll brackets do not use set screws to secure the rod within the bracket.

# RINGS & WANDS



## Petite Ring

Shown in Coal  
040424 • ID 1" • OD 1 3/8"



## Extra Small Ring

Shown in Alabaster  
040401 • ID 1 1/4" • OD 1 3/4"  
040464 • w/o Eyelets  
040465 • Bypass



## Square Ring

Shown in Alabaster & Earth  
040466 • ID 2" x 1 1/4"  
• OD 2 1/2" x 1 3/4"  
040427-BYP • Bypass



## Small Ring

Shown in Liquid Silver  
040402 • ID 1 7/8" • OD 2 3/8"  
040463 • Bypass



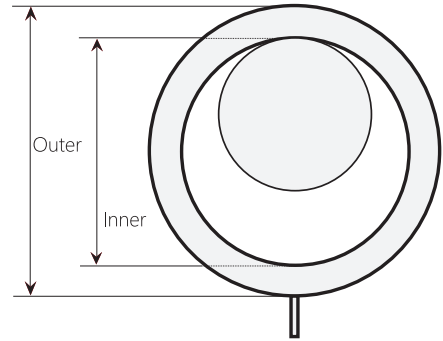
## Medium Ring

Shown in Alabaster  
040403 • ID 2 1/4" • OD 2 3/4"



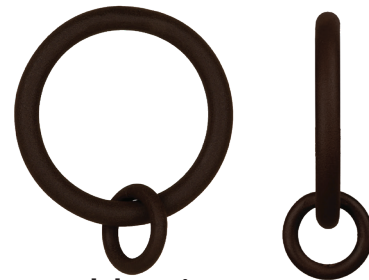
## Large Ring

Shown in Roman Coin  
040404 • ID 2 5/8"  
• OD 3 3/8"  
040404-BYP • Bypass



## Extra Large Ring

Shown in Monument Bronze  
040405 • ID 3 5/8"  
• OD 4 1/2"  
040405-BYP • Bypass



## Double Ring

Shown in Earth  
040406 • ID 2 5/8" • OD 3 3/8"  
Lower • ID 7/8" • OD 1 3/8"



## Ring with Clip

Shown in Forge  
040411 • ID 2 1/2" • OD 3"



## MASTER CARRIERS



### Strap Ring

Shown in Roman Coin

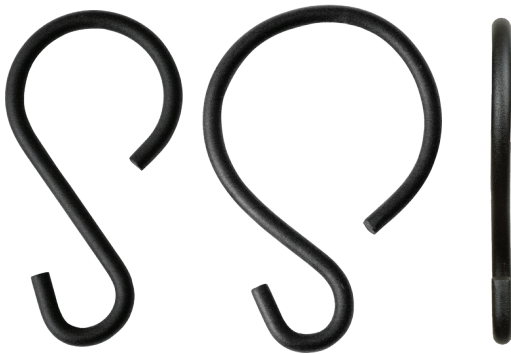
040425 • ID 1 7/8" • OD 2 1/8"



### Double Ring Master Carrier

Shown in Monument Bronze

Available in Overlap & Underlap  
Extra Small - Extra Large Rings



### S-Shaped Ring

Shown in Coal

040407 • Small • ID 1 7/8" • OD 2 3/8"

040408 • Large • ID 2 5/8" • OD 3 1/8"

Helser Brothers' Double Ring Master Carriers offer increased light control and stabilization for center-draw drapery.

These master carriers are custom made and work with any of our wands with clips. Bypass options are available.

## WANDS

### Iron Wands with Rings

Shown in Monument Bronze

36", 48", 60", 72", & 84"

Extra Small - Extra Large Rings

Bypass Option available



### Iron Wand w/ Clip

Shown in Coal

36", 48", 60", 72", & 84"

Can be cut to custom length



### Fiberglass Wand w/ Clip

Available in White

36", 48", 60", 72", & 84"



# MEDALLIONS



## Aqua

Shown in Earth  
040614M • 3" x 3"



## Maltese

Shown in Heirloom  
040612M • 3" x 3"



## Aztec

Shown in Monument Bronze  
040616M • 1 7/8" x 1 7/8"



## Oblong Rosette

Shown in Grecian Brass  
040615M • 1 7/8" x 3 1/4"



## Daisy

Shown in Vintage Brass  
040609M • 2 7/8" x 2 7/8"



## Plateau

Shown in Frost  
040611M • 2 7/8" x 2 7/8"



## El Sol

Shown in Coal  
040608M • 3" x 3"



## Pyramid

Shown in Riviera  
040605M • 2 7/8" x 2 7/8"



## Europa

Shown in Leather  
040652M • 4 1/8" x 4 1/8"



## Richleau

Shown in Oyster Shell  
040602M • 2 1/2" x 2 1/2"



## Rosette

Shown in Forge  
040606M • 3" x 3"

Medallions are shown at 30% scale for reference purposes.





### Spiro

Shown in Asti  
040613M • 3" x 3"

Make your cornice boards unique by adding medallions with our Cornice Board Adapter kit (pg. 38)!



### Sullivan

Shown in Rustic  
040601M • 3" x 3"



### Vega

Shown in Coal  
040650M • 6 1/2" x 6 1/2"



### Terra

Shown in Canyon  
040610M • 3" x 3"

## BASES, TABS, & POSTS



### Adjustable Medallion Base

Shown in Monument Bronze

040655 A-G • 2" Round Base

040656 A-G • 2" Square Base

Available with clearances from 3 1/2" - 4 1/2" to 6 1/2" - 7 1/2"



### Picardie Medallion Base

Shown in Forge

040657 • 1 7/8" x 3 3/8" Base • 2 1/2" - 3" Clearance

040658 • 1 7/8" x 3 3/8" Base • 3" - 6" Clearance

Clearances are cut to measure



### Horizontal Finial Base

Shown in Manchester (Globe finial shown on right)

040619A • 1 7/8" x 3 3/8" Base • 2 1/2" - 3" Clearance

040619B • 1 7/8" x 3 3/8" Base • 3" - 6" Clearance

Clearances are cut to measure

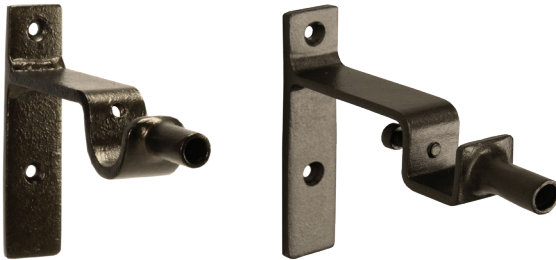


### Adjustable Vertical Mount Finial Base

Shown in Forge (Globe finial shown on right)

040654A • 1 7/8" x 3 3/8" Base • 2 1/2" - 3" Clearance

040654B • 1 7/8" x 3 3/8" Base • 3" - 6" Clearance



### Medallion Bracket Mount

Shown in Monument Bronze

040621 • Bracket sold separately

Cannot be used on bypass brackets



### Hammered Tab Post

Shown with Terra medallion in Manchester

040620 • 3" Clearance



### Scroll Tab

Shown in Earth (L) & Forge (R)

040617 • Small • 1/2" x 3 1/4" • I.D.: 1 1/4"

040618 • Large • 5/8" x 4 1/8" • I.D.: 1 3/4"

Can be mounted in multiple orientations



### Finial/Medallion Cornice Adapter Kit

Shown with Kaleidoscope & Small Globe in Coal

040622 • Finials/Medallions sold separately



# TIEBACKS ARMS



## Iron Tieback Arm

Shown in Earth (Oakwood finial shown on right)  
040701 • 10 ½" Long • 5 ¼" Clearance  
Can be used with a finial of your choice



## Foldaway Adjustable Tieback Arm

Shown in Heirloom  
040704 • 11" Long • 4 ¼" Clearance  
Comes with a 2 ¾" round base  
Folds flat against the wall when not in use



## Pivoting Tieback Arm

Shown in Crown (L) & Coal (R)  
040702 • 7" Long • 7" Clearance  
Comes with a 1" x 2 ½" rectangular base  
Looks and works great with our Scroll Tabs



## Scroll Tieback Arm

Shown in Coal  
040703 • 11" Long • 5 ¾" Clearance

PURE  
/ pyör /

*Adjective*

.....

**Def:** without any extraneous and  
unnecessary elements





# 3 • CATALINA







Be it for a patio in the arid Southwest, a piazza in the foggy Northeast, or a pagoda in a breezy Midwest garden, Catalina offers sturdy and stylish options suitable for any outdoor space.

.....

## C

# ONTENTS

Chapter Cover	• 40
Contents	• 42
Finials	• 44
End-Caps & Collars	• 44
Rods	• 45
Brackets	• 46
Rings	• 47
Tiebacks	• 48
Outdoor French Poles	• 49

# FINIALS, COLLARS, & END-CAPS

## FINIALS



### Cannonball

Shown in Coal, Rustic, & Canyon

720204 • 1" x 1"

720202 • 2" x 2"

720201 • 3" x 3"

Finials are shown at 25% scale for reference purposes.

The price of Low-Profile collars is included in the finial price.



### Pyramid

Shown in Coal

720205 • 2 3/4" x 2 3/4"

## LOW-PROFILE



### Low-Profile Collars & End-Caps

Shown in Coal

Available in 7/8", 1 1/4", 1 3/4", & 2"

## CAP-STYLE



### Cap-Style End-Cap

Shown in Forge

Available in 7/8", 1 1/4", 1 3/4", & 2"



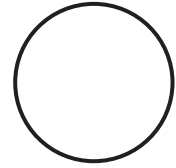
# CATALINA RODS



## 7/8" Round Rod

Shown in Coal

720101 • 63" (Heavy) & 73" (Light) Bracket to Bracket Maximum



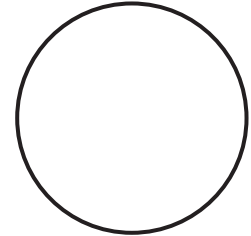
Actual Size



## 1 1/4" Round Rod

Shown in Canyon

720102 • 78" (Heavy) & 90" (Light) Bracket to Bracket Maximum



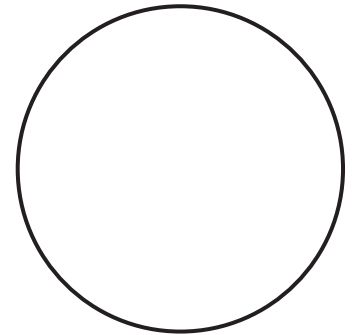
Actual Size



## 1 3/4" Round Rod

Shown in Forge

720103 • 108" (Heavy) & 120" (Light) Bracket to Bracket Maximum



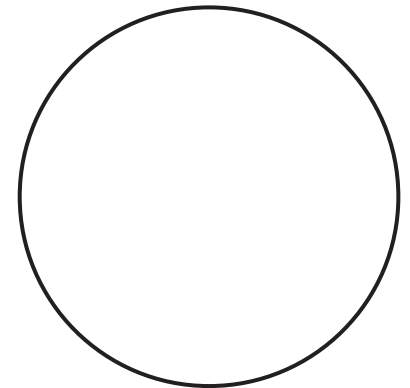
Actual Size



## 2" Round Rod

Shown in Rustic

720104 • 140" (Heavy) & 160" (Light) Bracket to Bracket Maximum



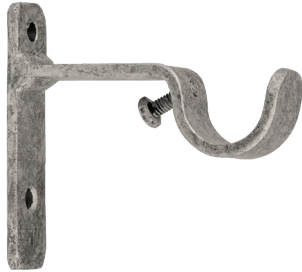
Actual Size

### Bracket to Bracket Maximum

The Bracket to Bracket maximum is the maximum distance in inches between brackets before an additional bracket must be added to avoid unwanted bowing or sagging. The maximum depends on the weight of the treatment fabric and the rod diameter. Some rods have the same maximum regardless of fabric weight.

**Light Treatments** include unlined, sheer, and lightweight fabric  
**Heavy Treatments** include lined, blackout, or upholstery fabric

# CATALINA BRACKETS



## Standard Strap Bracket

Available with standard clearances only

- 720301 • 7/8" Round • 2 7/8" Clearance
- 720302 • 1 1/4" Round • 2 7/8" Clearance
- 720303 • 1 3/4" Round • 3 3/8" Clearance
- 720304 • 2" Round • 3 1/8" Clearance



## Enclosed Inside Mount Bracket

Requires rod length deductions

- 720305 • 7/8" Round
- 720306 • 1 1/4" Round
- 720307 • 1 3/4" Round



## Inside Mount Bracket

Requires rod length deductions

- 720308 • 2" Round





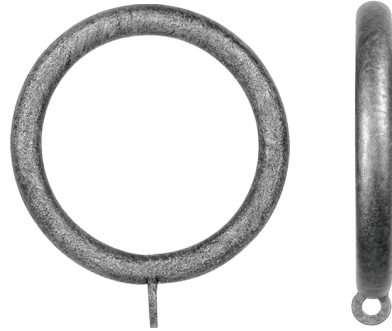
# CATALINA RINGS



## Extra Small Ring

Shown in Alabaster

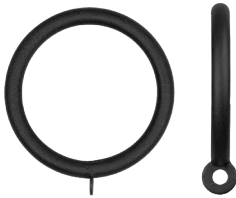
720401 • ID 1 ¼"  
• OD 1 ¾"



## Extra Large Ring

Shown in Monument Bronze

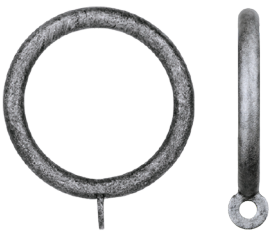
720405 • ID 3 ⅝" • OD 4 ½"



## Small Ring

Shown in Liquid Silver

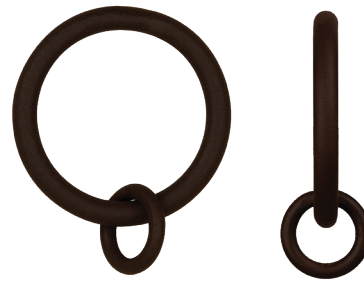
720402 • ID 1 ⅞"  
• OD 2 ¾"



## Medium Ring

Shown in Alabaster

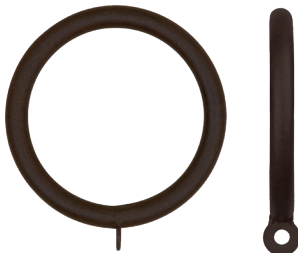
720403 • ID 2 ¼"  
• OD 2 ¾"



## Double Ring

Shown in Earth

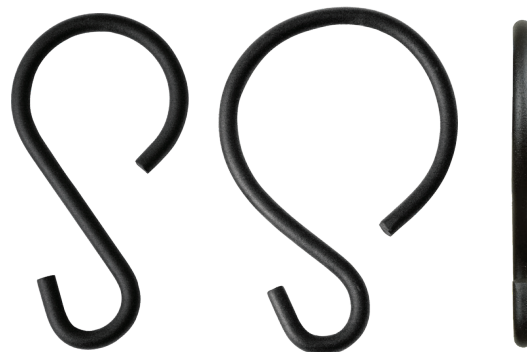
720406 • ID 2 ⅝" • OD 3 ⅜"  
Lower • ID ⅞" • OD 1 ⅜"



## Large Ring

Shown in Roman Coin

720404 • ID 2 ⅝"  
• OD 3 ⅜"



## S-Shaped Ring

Shown in Coal

720407 • Small • ID 1 ⅞" • OD 2 ¾"  
720408 • Large • ID 2 ⅝" • OD 3 ⅜"

Worried about wind wear & tear? Thanks to this ring hack by one of our creative clients, Dian Garbarini, you don't need to be!

On the left, she used heavy duty Velcro tabs (outdoor snaps are another alternative) to hang her outdoor drapery on our versatile Double Rings, providing a sturdy, resistant treatment option that is easy to remove and clean.

**Left:** Image Courtesy of Designs by Dian (CA)

# TIE-BACKS ARMS



## Scroll Tab

Shown in Canyon (L) & Forge (R)

720601 • Small • 1/2" x 3 1/4" • I.D.: 1 1/4"

720602 • Large • 5/8" x 4 1/8" • I.D.: 1 3/4"

Can be mounted in multiple directions



## Iron Tieback Arm

Shown in Earth (Oakwood finial shown on right)

720701 • 10 1/2" Long • 5 1/4" Clearance

Can be used with a finial of your choice



## Pivoting Tieback Arm

Shown in Crown (L) & Coal (R)

720702 • 7" Long • 7" Clearance

Comes with a 1" x 2 1/2" rectangular base

Looks and works great with our Scroll Tabs

Excellent for outdoor wind control



## Scroll Tieback Arm

Shown in Coal

720703 • 11" Long • 5 3/4" Clearance



# OUTDOOR FRENCH POLES

Helser Brothers offers mitered French Pole kits for outdoor use in two styles: Standard and One-Sided. Each kit contains base plate(s), the labor for fabricating the return, and mounting hardware. Rods are priced and sold separately.

## Mitered Outdoor French Pole Kits

Shown in Coal

- **4 rod sizes:** 7/8", 1 1/4", 1 3/4", & 2"
- **2 Base styles:** Round & Square
- Standard or One-Sided versions available
- **Clearance:** No minimum
- **Rings:** With Mitered rods, only select rings are able to traverse around the 90° angle.

See page 40 of your Price Guide for a complete list of recommended rings.



CATALINA

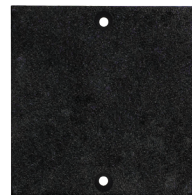
## BASE PLATES



### Round Base Plate

Comes in 2 sizes

- **2 3/4"** - Used for 7/8" & 1 1/4"
- **3 1/2"** - Used for Mitered 1 3/4" & 2"

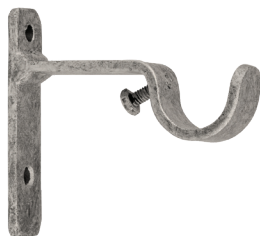


### Square Base Plate

Comes in 2 sizes

- **2"** - Used for 7/8" & 1 1/4"
- **3"** - Used for Mitered 1 3/4" & 2"

## RECOMMENDED BRACKETS



### Standard Strap Bracket

Available with standard clearances only

- |        |                |                    |
|--------|----------------|--------------------|
| 720301 | • 7/8" Round   | • 2 7/8" Clearance |
| 720302 | • 1 1/4" Round | • 2 7/8" Clearance |
| 720303 | • 1 3/4" Round | • 3 3/8" Clearance |
| 720304 | • 2" Round     | • 3 1/8" Clearance |





# 4 • FRENCH POLES



POL·ISHED

/ `päliSHt /

*Adjective*

.....

**Def:** refined, sophisticated, or elegant

Whether you call them French Poles, French Rods, or French Returns, these versatile rods live up to their effortlessly chic namesake. Simple yet elegant, they fit in both casual and formal spaces.

.....

## CONTENTS

Chapter Cover	• 50
Contents	• 52
Curved French Poles	• 54
Mitered French Poles	• 55
Sash Rod	• 56
Custom French Poles	• 56
Base Plates	• 57
Rods	• 58
Recommended Brackets	• 59





FRENCH POLES



# FRENCH POLE KITS

Helser Brothers offers 3 types of French Pole Kits: Curved, Mitered, and Sash Rod (shown on right from top to bottom, respectively).

Each kit comes in two styles: Standard and One-Sided, and contain base plate(s), the labor for fabricating the return, and mounting hardware.

Standard Kits come with two base plates and returns. One-Sided Kits come with one base plate and a return. Rods are priced and sold separately.

Support brackets, rings, and other accessories are purchased à la carte.



## CURVED FRENCH POLE KITS



### 5/8" French Pole Kit

Shown in Forge with a vertical Picardie base

- **Bases:** Round, Picardie, EZ Mount, & Custom Strap Base
- Standard & One-Sided versions available
- **Minimum Clearance:** 2 1/2"



### 7/8" French Pole Kit

Shown in Forge with an EZ Mount base

- **Bases:** Round, Picardie, EZ Mount, & Custom Strap Base
- Standard & One-Sided versions available
- **Minimum Clearance:** 3"



### 1 1/4" French Pole Kit

Shown in Forge with a Round base

- **Bases:** Round, Artigiani, EZ Mount, & Custom Strap Base
- Standard & One-Sided versions available
- **Minimum Clearance:** 3 1/4"



# MITERED FRENCH POLE KITS

## 5/8" Mitered French Pole Kit

Shown in Forge with an EZ Mount base

- **Bases:** Round, Square, & EZ Mount Base
- One-Sided and Modified corner versions available



## 7/8" Mitered French Pole Kit

Shown in Forge with a Square base

- **Bases:** Round, Square, & EZ Mount Base
- One-Sided and Modified corner versions available



## 7/8" Mitered Square French Pole Kit

Shown in Forge with an EZ Mount base

- **Bases:** Round, Square, & EZ Mount Base
- One-Sided and Modified corner versions available



## 1 1/4" Mitered French Pole Kit

Shown in Forge with a Round base

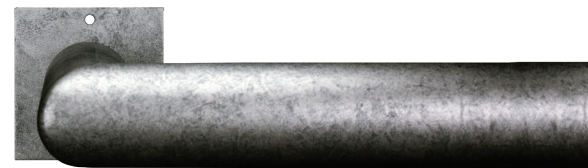
- **Bases:** Round, Square, & EZ Mount Base
- One-Sided and Modified corner versions available



## 1 3/4" Mitered French Pole Kit

Shown in Forge with a Square base

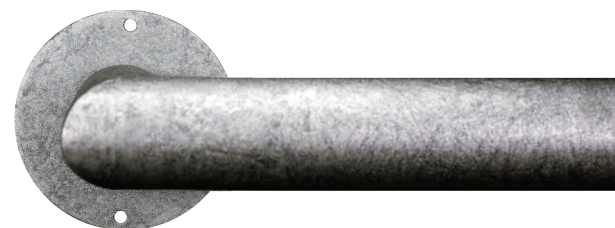
- **Bases:** Round & Square Base
- One-Sided and Modified corner versions available



## 2" Mitered French Pole Kit

Shown in Forge with a Round base

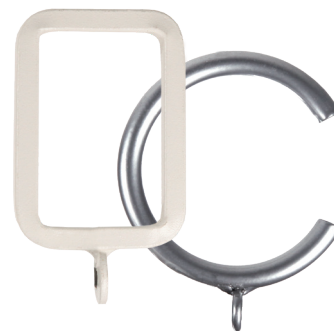
- **Bases:** Round & Square Base
- One-Sided and Modified corner versions available



### RING COMPATIBILITY & MITERED RODS:

With Mitered rods, only select rings are able to traverse around the 90° angle during assembly. To allow for a wider availability of usable rings Modified corners are available on all Mitered rods.

See page 40 of your Price Guide for a complete list of recommended rings for each rod diameter.



## SASH ROD KIT



### 3/8" French Pole (Sash Rod) Kit

- **Bases:** Round & Custom Strap Base
- Welded base plates for stability
- **Minimum Clearance:** 1 1/2"

The 3/8" French Pole/Sash Rod is perfect for situations when a very limited clearance is desired. Base plates come welded to the rod, so rod pockets need to be large enough to fit over base plates.

## CUSTOM FRENCH POLE KITS



### Custom French Pole Kit

- Standard or One-sided kits available
- Base plates and rods sold separately

**Elements shown:** Square rod on a Small Artéface Base Plate with the Luna Texture.



Flex those creative muscles and design your own French Poles using elements from our other lines, such as using a medallion or one of our Artéface bracket bases as a base plate.

You can also be inspired by this amazing custom treatment designed by Ben Comstock of Shadowmaker (CO), seen on the left, and use bends, bows, or elbows to manipulate your poles into impressive configurations.



# BASE PLATES & RODS

## BASE PLATES



### EZ Mount Base Plate

Comes in 1 size

- **1 1/2" x 3"** - Used for Standard & Mitered 5/8" to 1 1/4" French Poles
- Unique design allows for easy installation.



### Custom Strap Base Plate

Comes in custom sizes

- **1/2" x 2"** - Used for 3/8" Sash rods
- Custom base plates available for Standard 5/8" to 1 1/4" French Poles
- Specify Vertical or Horizontal orientation
- Specify Top, Middle, or Bottom mount.



### Artigiani Base Plate

Comes in 1 size

- **2 1/2" x 4 1/2" (Vertical)** - Used for 1 1/4" Standard French Poles
- Specify Vertical or Horizontal orientation



### Picardie Base Plate

Comes in 1 size

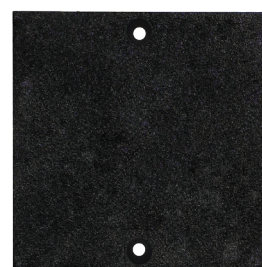
- **1 7/8" x 3 3/8" (Vertical)** - Used for 5/8" & 7/8" Standard French Poles
- Specify Vertical or Horizontal orientation



### Round Base Plate

Comes in 3 sizes

- **1 1/2"** - Used for 3/8" Sash Rods
- **2 3/4"** - Used for Standard & Mitered 5/8" to 1 1/4" French Poles
- **3 1/2"** - Used for Mitered 1 3/4" to 2" French Poles



### Square Base Plate

Comes in 2 sizes

- **2"** - Used for Mitered 5/8" to 1 1/4" French Poles
- **3"** - Used for Mitered 1 3/4" to 2" French Poles

# RODS



## **3/8" Round Rod**

Shown in Coal

040114 • 36" (Light) & 24" (Heavy) Bracket to Bracket Maximum

Used with Sash Rods



Actual Size

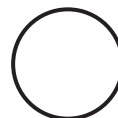


## **5/8" Round Rod**

Shown in Vintage Brass

040109 • 64" (Light) & 48" (Heavy) Bracket to Bracket Maximum

Used with Mitered & Curved Rods



Actual Size

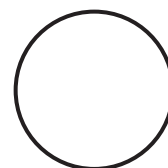


## **7/8" Round Rod**

Shown in Liquid Silver

040105 • 73" (Light) & 63" (Heavy) Bracket to Bracket Maximum

Used with Mitered & Curved Rods



Actual Size

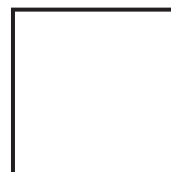


## **7/8" Square Rod**

Shown in Roman Coin

040116 • 100" (Light) & 85" (Heavy) Bracket to Bracket Maximum

Used with Mitered Rods



Actual Size

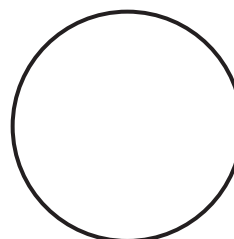


## **1 1/4" Round Rod**

Shown in Crown

040106 • 90" (Light) & 78" (Heavy) Bracket to Bracket Maximum

Used with Mitered & Curved Rods



Actual Size

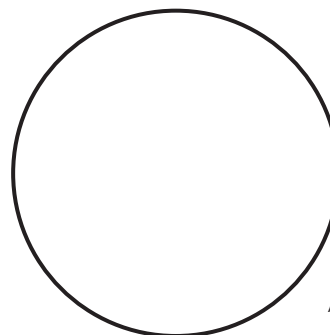


## **1 3/4" Round Rod**

Shown in Monument Bronze

040107 • 120" (Light) & 108" (Heavy) Bracket to Bracket Maximum

Used with Mitered Rods



Actual Size



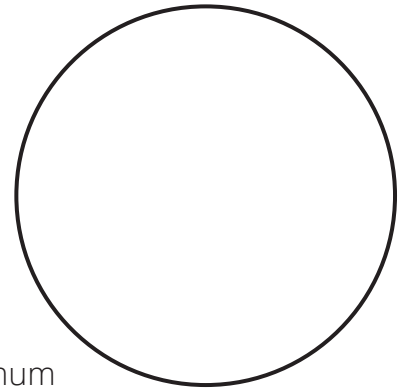


## 2" Round Rod

Shown in Pewter

040110 • 160" (Light) & 140" (Heavy) Bracket to Bracket Maximum

Used with Mitered Rods



Actual Size

### Bracket to Bracket Maximum

The Bracket to Bracket maximum is the maximum distance in inches between brackets before an additional bracket must be added to avoid unwanted bowing or sagging. The maximum depends on the weight of the treatment fabric and the rod diameter. Some rods have the same maximum regardless of fabric weight.

**Light Treatments** include unlined, sheer, and lightweight fabric

**Heavy Treatments** include lined, blackout, or upholstery fabric

## RECOMMENDED BRACKETS



### EZ Mount Bracket

Available with standard clearances only

0403161 • 7/8" Round • 4" Clearance

0403162 • 1 1/4" Round • 3 7/8" Clearance

Clearances include thickness of base plate



### Horizontal Mount Strap Bracket

Available with custom clearances only

0403136 • 3/8" Petite

040344 • 5/8" Petite

0403137 • 7/8" Petite Square

040345 • 7/8" Petite

040341 • 1 1/4" Round

040342 • 1 3/4" Round

040373 • 2" Round



Bypass options available for select sizes



### Inside Mount Bracket

Requires rod length deductions

0403109 • 5/8" Round • Enclosed

0403110 • 7/8" Round • Enclosed

0403103 • 7/8" Square

0403111 • 1 1/4" Round • Enclosed

0403112 • 1 3/4" Round • Enclosed

0403108 • 2" Round

BEAU·TI·FUL

/ `byōōdəfəl /

*Adjective*

.....

**Def:** pleasing the senses or mind aesthetically



# 5 • ISABELLA



ISABELLA







With its elegant motifs, carved wooden brackets and finials, and hand-painted finishes, Isabella can bring a touch of Old World charm, rustic warmth, or a natural modern vibe to any room.

.....

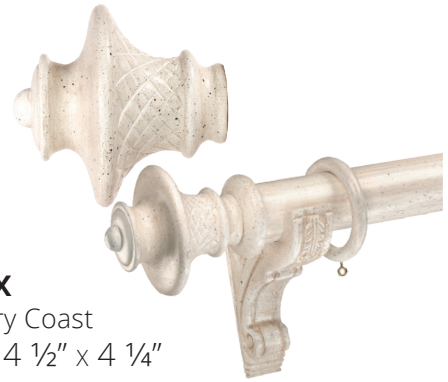
## CONTENTS

Chapter Cover	• 60
Contents	• 62
Finials	• 64
End-Caps & Collars	• 65
Rods	• 66
Bracket	• 68
Rings	• 69
Wands	• 69
Medallions	• 69
Bases	• 69

# ISABELLA FINIALS

Finials are shown at 25% scale for reference purposes.

Savoy wood collars are factored into the price of each finial.



## Bordeaux

Shown in Ivory Coast  
200222 • 4 1/2" x 4 1/4"



## Calais

Shown in English Walnut  
200228 • 5" x 3 3/8"



## Cambridge

Shown in Vintage Brass  
200221 • 5" x 3 7/8"



## Cologne

Shown in Asti  
200220 • 5" x 4 1/2"



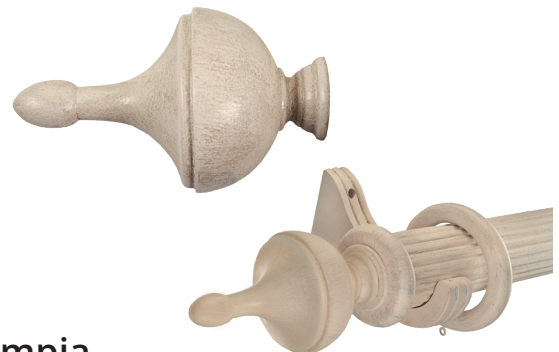
## Milan

Shown in Oyster Shell  
200227 • 4 1/2" x 3 1/2"



## Monaco

Shown in Swiss Caramel  
200230 • 5 3/4" x 3"



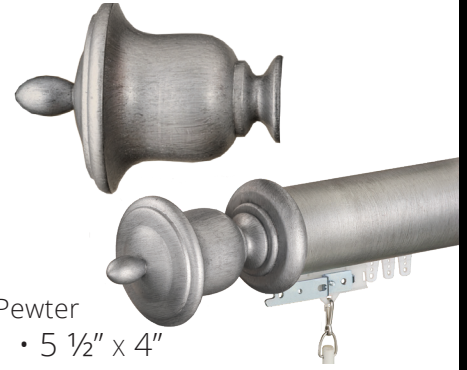
## Olympia

Shown in Heirloom  
200224 • 6 5/8" x 3 3/4"





**Reggio**  
 Shown in Monument Bronze  
 200225 • 4 1/2" x 3 1/4"  
 Does not require a collar



**Thrace**  
 Shown in Pewter  
 200223 • 5 1/2" x 4"



**Vienna**  
 Shown in Aged Florentine  
 200229 • 6 1/4" x 3 1/2"



**Wexford**  
 Shown in Riviera  
 200226 • 5 1/2" x 3 1/4"

# END-CAPS & COLLARS

## END-CAPS



**2" Wood End-Cap**  
 Shown in Black Forest  
 200214 • 1 1/4" x 2 1/4"



**2 3/4" Wood End-Cap**  
 Shown in Chelsea Bisque  
 270214 • 1 1/4" x 3 1/8"

## COLLARS



**2" Savoy Wood Collar**  
 Shown in Monument Bronze  
 200903 • 5/8" x 2 3/4"



**2 3/4" Savoy Wood Collar**  
 Shown in Aged Florentine  
 200904 • 3/4" x 3 1/2"

**Don't want to use a Wood Finial?**  
 Use any HB finial on our wood rods, thanks to our 2" and 2 3/4" metal collars and select finishes available in both of our wood and metal lines.

# ISABELLA WOOD RODS

Our wooden rods come in two styles: Smooth and Fluted.

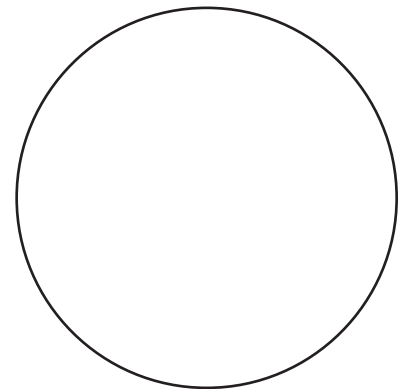
They also come as standard round rods or as routed rods, which have a  $\frac{3}{4}$ " square notch for our CS track. For more information about our routed Isabella wood rods, see Track & Motorization starting on page 117.



## 2" Smooth Wood Rod

Shown in Monument Bronze

200101 • 72" (Light & Heavy) Bracket to Bracket Maximum



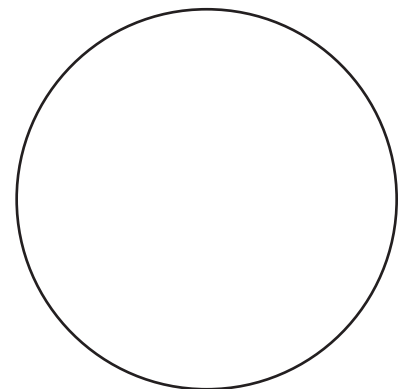
Actual Size



## 2" Fluted Wood Rod

Shown in English Walnut

200102 • 72" (Light & Heavy) Bracket to Bracket Maximum



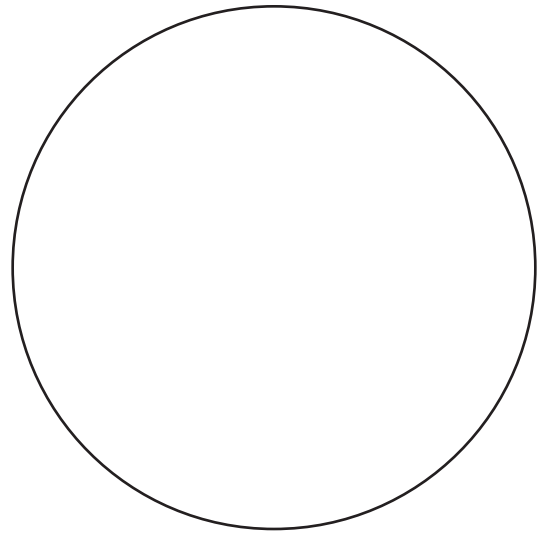




### 2 3/4" Smooth Wood Rod

Shown in Chelsea Bisque

270101 • 72" (Light & Heavy) Bracket to Bracket Maximum



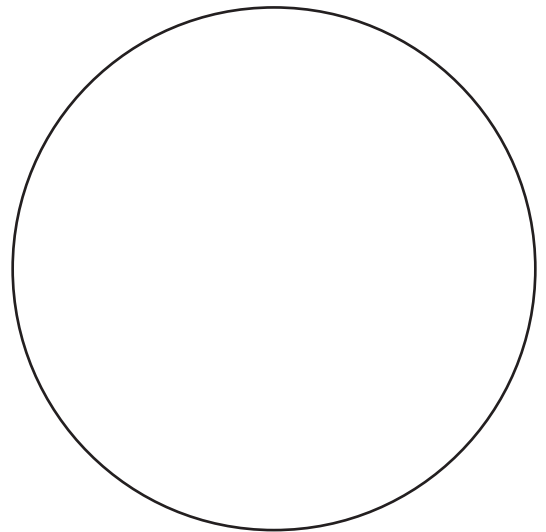
Actual Size



### 2 3/4" Fluted Wood Rod

Shown in Heirloom

270102 • 72" (Light & Heavy) Bracket to Bracket Maximum



#### Bracket to Bracket Maximum

The Bracket to Bracket maximum is the maximum distance in inches between brackets before an additional bracket must be added to avoid unwanted bowing or sagging. The maximum depends on the weight of the treatment fabric and the rod diameter. Some rods have the same maximum regardless of fabric weight.

**Light Treatments** include unlined, sheer, and lightweight fabric

**Heavy Treatments** include lined, blackout, or upholstery fabric

# BRACKETS, RINGS, & WANDS

## BRACKETS



### Standard Wood Bracket

Shown in Monument Bronze

200301 • 2" Round • 3" Clearance

270301 • 2 3/4" Round • 4" Clearance

Available with standard clearances only



### Louvre Wood Bracket

Shown in Ivory Coast

200310 • 2" Round • 3" Clearance

200311 • 2 3/4" Round • 2 1/2" Clearance

Available with standard clearances only



### Wood Inside Mount Bracket

Shown in Black Forest

200302 • 2" Round

270302 • 2 3/4" Round

Requires rod length deductions



## RINGS



**2" Wood Ring**  
Shown in Monument Bronze  
200401 • ID 2 7/8" • OD 3 7/8"



**2 3/4" Wood Ring**  
Shown in Ivory Coast  
270401 • ID 3 1/2" • OD 5"

## WANDS

### Fiberglass Wand w/ Clip

Available in White  
36", 48", 60", 72", & 84"



## MEDALLIONS

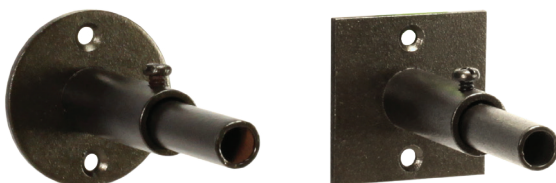


**Copenhagen**  
Shown in Chelsea Bisque  
200602 • 3 1/4" x 3 1/4"



**Lucerne**  
Shown in Heirloom  
200601 • 3" x 3"

## MEDALLION BASES



### Adjustable Medallion Base

Shown in Monument Bronze  
200603A-G • 2" Round Base  
200604A-G • 2" Square Base  
Available with clearances from 3 1/2" - 4 1/2" to 6 1/2" - 7 1/2"  
Only available in Painted Metal finishes





# 6 • JACKIE VON TOBEL



DE·SIGN·ER

/ də'zīnər /

*Adjective*

.....

**Def:** upscale and fashionable

In fashion, there is the little black dress that never goes out of style. In design, there is Jackie Von Tobel. Her collection offers timeless elements with endless combinations that are sure to please the most discerning of design palate.

.....

## C

# ONTENTS

Chapter Cover	• 70
Contents	• 72
Finials	• 74
End-Caps & Collars	• 74
Rods	• 75
Brackets	• 76
Rings	• 78
Wands	• 79
Ornaments	• 79
Medallions	• 80
Bases	• 81
Tiebacks	• 81







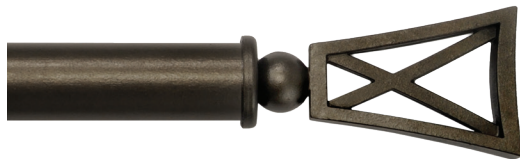
# FINIALS, END-CAPS, & COLLARS

## FINIALS



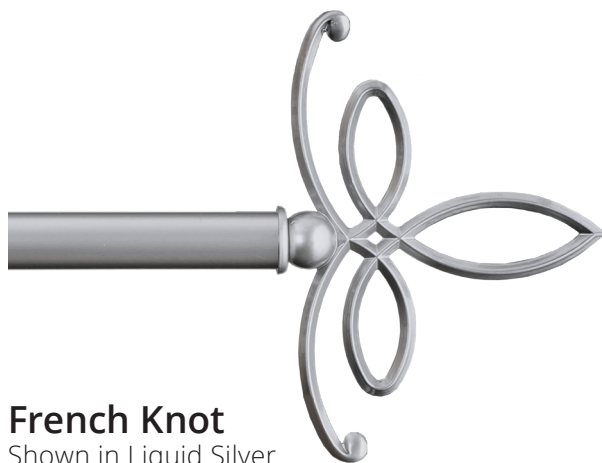
### Arrowhead

Shown in Vintage Brass  
160206 • 6 3/4" x 2 1/2"



### Exclamation Point

Shown in Monument Bronze  
160208 • 5 5/8" x 3 1/4"



### French Knot

Shown in Liquid Silver  
160203 • 7" x 9 3/4"



### Greek Key

Shown in Grecian Brass  
160205 • 5 1/4" x 3"



### Javelin

Shown in Monument Bronze  
160201 • 7 7/8" x 3 1/4"

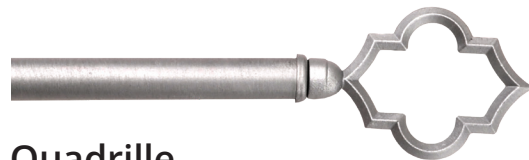
Finials are shown at 25% scale for reference purposes.

A low-profile collar will be included with each finial purchase.



### Pagoda w/ Bead & Tassel

Shown in Asti  
160204 • 7 3/4" x 5 1/2" • Includes Ornament



### Quadrille

Shown in Pewter  
160207 • 4 7/8" x 3 1/4"



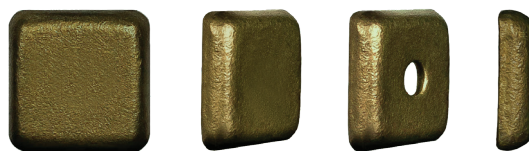
### Trophy

Shown in Ivory Coast  
160202 • 5 5/8" x 3"



### Round End-Caps & Collars

Shown in Vintage Brass  
Available in 7/8", 1 1/4", & 1 3/4"



### Square End-Caps & Collars

Shown in Grecian Brass  
Available in 7/8" only



# JACKIE VON TOBEL RODS

## RODS



### 7/8" Square Rod

Shown in Roman Coin

160101 • 85" (Heavy) & 100" (Light) Bracket to Bracket Maximum



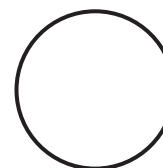
Actual Size



### 7/8" Round Rod

Shown in Oyster Shell

160102 • 63" (Heavy) & 73" (Light) Bracket to Bracket Maximum



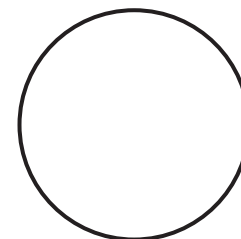
Actual Size



### 1 1/4" Round Rod

Shown in Asti

160103 • 78" (Heavy) & 90" (Light) Bracket to Bracket Maximum



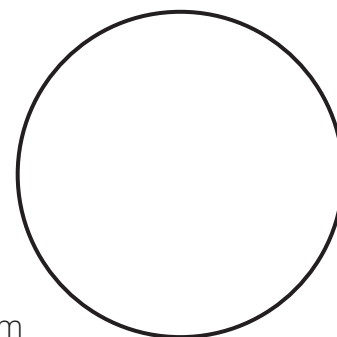
Actual Size



### 1 3/4" Round Rod

Shown in Monument Bronze

160104 • 108" (Heavy) & 120" (Light) Bracket to Bracket Maximum



Actual Size

### Bracket to Bracket Maximum

The Bracket to Bracket maximum is the maximum distance in inches between brackets before an additional bracket must be added to avoid unwanted bowing or sagging. The maximum depends on the weight of the treatment fabric and the rod diameter. Some rods have the same maximum regardless of fabric weight.

**Light Treatments** include unlined, sheer, and lightweight fabric  
**Heavy Treatments** include lined, blackout, or upholstery fabric

# JACKIE VON TOBEL BRACKETS

## STRAP STYLE



### Standard Strap Bracket

Available with both standard and custom clearances

- |        |                |                    |
|--------|----------------|--------------------|
| 160301 | • 7/8" Square  | • 2 7/8" Clearance |
| 160310 | • 7/8" Round   | • 2 7/8" Clearance |
| 160319 | • 1 1/4" Round | • 2 7/8" Clearance |
| 160328 | • 1 3/4" Round | • 3 3/8" Clearance |



Bypass options available on select sizes



### Adjustable Strap Bracket

Available with multiple adjustable clearances

- |                 |                |
|-----------------|----------------|
| 160308A, B OR D | • 7/8" Square  |
| 160317A, B OR D | • 7/8" Round   |
| 160326A, B OR D | • 1 1/4" Round |
| 160335A, B OR D | • 1 3/4" Round |



Horizontal base plates & bypass options available



### Horizontal Mount Strap Bracket

Available with custom clearances only

- |        |                |
|--------|----------------|
| 160306 | • 7/8" Square  |
| 160315 | • 7/8" Round   |
| 160324 | • 1 1/4" Round |
| 160333 | • 1 3/4" Round |



Bypass options available



Vertical Bases also available!

### Horizontal Adjustable Bypass Bracket

Available with adjustable clearances only

- |        |                |                                |
|--------|----------------|--------------------------------|
| 160355 | • 7/8" Round   | • 3" - 4" Clearance            |
| 160357 | • 7/8" Round   | • 4" - 5" or 5" - 6" Clearance |
| 160356 | • 1 1/4" Round | • 3" - 4" Clearance            |
| 160358 | • 1 1/4" Round | • 4" - 5" or 5" - 6" Clearance |



### Ceiling Mount Strap Bracket

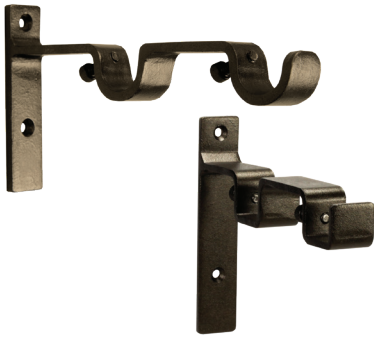
Available with custom drops only

- |        |                |
|--------|----------------|
| 160305 | • 7/8" Square  |
| 160314 | • 7/8" Round   |
| 160323 | • 1 1/4" Round |
| 160332 | • 1 3/4" Round |



Bypass options available





### Double Strap Bracket

Available with custom clearances only

- 160337 • 7/8" & 7/8" Square
- 160338 • 7/8" & 7/8" Round
- 160339 • 7/8" & 1 1/4" Round
- 160340 • 7/8" & 1 3/4" Round
- 160341 • 1 1/4" & 1 1/4" Round
- 160342 • 1 1/4" & 1 3/4" Round
- 160343 • 1 3/4" & 1 3/4" Round



Bypass options available on select sizes

## BROOKLYN STYLE



### Brooklyn Bracket

Available with standard clearances only

- 160348 • 7/8" Round • 2 7/8" Clearance
- 160349 • 1 1/4" Round • 2 7/8" Clearance
- 160350 • 1 3/4" Round • 3 1/8" Clearance



### Double Brooklyn Bracket

Available with standard clearances only

- 160352 • 7/8" & 7/8" Round • 2" & 4 1/2" Clearance
- 160353 • 1 1/4" & 1 1/4" Round • 2" & 5 1/2" Clearance
- 160354 • 1 3/4" & 1 3/4" Round • 2" & 6 1/4" Clearance

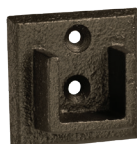
## INSIDE MOUNT STYLE



### Enclosed Inside Mount Bracket

Requires rod length deductions

- 160344 • 7/8" Round
- 160345 • 1 1/4" Round
- 160346 • 1 3/4" Round



### Square Inside Mount Bracket

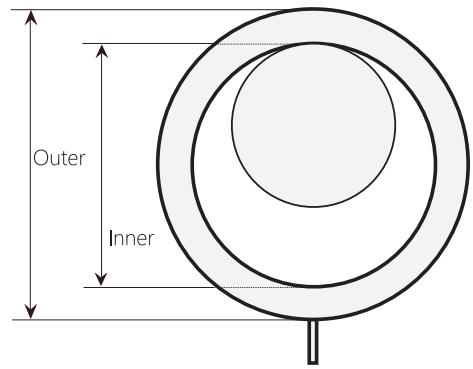
Requires rod length deductions

- 160307 • 7/8" Square

# RINGS, WANDS, & ORNAMENTS



Extra Small Ring  
Shown in Alabaster  
160403 • ID 1 1/4" • OD 1 3/4"  
160412 • Bypass



Square Ring  
Shown in Alabaster  
160401 • ID 2" x 1 1/4"  
• OD 2 1/2" x 1 3/4"  
160402-BYP • Bypass



Ring with Clip  
Shown in Forge  
160408 • ID 2 1/2" • OD 3"



Strap Ring  
Shown in Roman Coin  
160407 • ID 1 7/8"  
• OD 2 1/8"



Small Ring  
Shown in Liquid Silver  
160404 • ID 1 7/8"  
• OD 2 3/8"  
160413 • Bypass



Large Ring  
Shown in Roman Coin  
160406 • ID 2 5/8" • OD 3 3/8"  
160411-BYP • Bypass



Medium Ring  
Shown in Alabaster  
160405 • ID 2 1/4"  
• OD 2 3/4"



# WANDS

## Iron Wand w/ Clip

Shown in Coal  
36", 48", 60", 72", & 84"  
Can be cut to custom length



## Fiberglass Wand w/ Clip

Available in White  
36", 48", 60", 72", & 84"



# ORNAMENTS



## Bead

Shown in Forge  
160905 • 1/2" x 1/2"

Jackie Von Tobel ornaments may seem small but they add an entirely new dimension to consider when creating that perfect treatment.

Use them on your finials, medallions, or the fabric itself!



## Tassel

Shown in Forge  
160904 • 1 1/2" x 1 3/4"



## Teardrop

Shown in Forge  
160903 • 7/8" x 1 5/8"



## Tassel & Bead

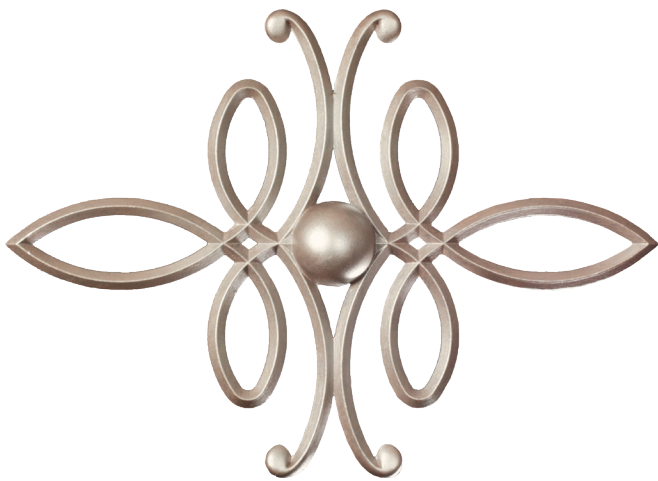
Shown in Forge  
160902 • 1 1/2" x 2 1/4"



## Teardrop & Bead

Shown in Forge  
160901 • 7/8" x 2 1/8"

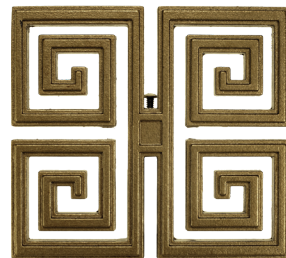
# MEDALLIONS



## French Knot

Shown in Oyster Shell

160601M • 13 ¾" x 9 ¾"



## Greek Key

Shown in Grecian Brass

160603M • 5 7/8" x 5 3/8"

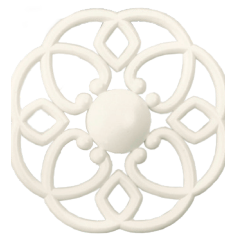


## Heraldry

Shown in Monument Bronze

160605M • 6 ¼" x 6 ¼"

7 ½" x 7 ½" on Diagonal



## Kaleidoscope

Shown in Alabaster

160604M • 5" x 5"

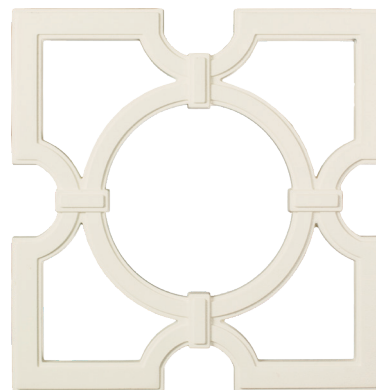


## Shield w/ Teardrop & Bead

Shown in Asti

160606M • 2 ¾" x 8 1/8"

Height includes ornament



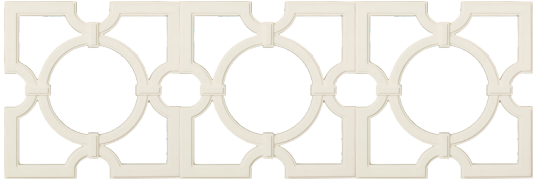
## Trellis

Shown in Alabaster

160602M • 8" x 8"



# MOUNTING OPTIONS



Medallion Bridge Straps let you transform medallions into custom patterns in a snap.

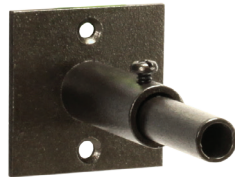


## Medallion Bridge Straps

Shown in Forge

160610 • 1/2" x 1"

Requires a bracket every 2<sup>nd</sup> medallion



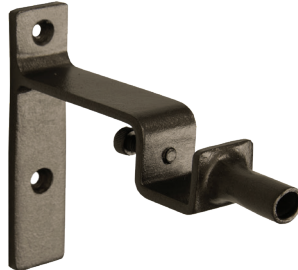
## Adjustable Medallion Base

Shown in Monument Bronze

160607A-G • 2" Round Base

160608A-G • 2" Square Base

Available with clearances from 3 1/2" - 4 1/2" to 6 1/2" - 7 1/2"



## Medallion Bracket Mount

Shown in Monument Bronze

160609 • Bracket sold separately

Cannot be used on bypass Brackets



## Finial/Medallion Cornice Adapter Kit

Shown with Kaleidoscope & Small Globe in Coal

160611 • Finials/Medallions sold separately



## Iron Tieback Arm

Shown in Earth

160701 • 10 1/2" Long • 5 1/4" Clearance

Can be used with a finial of your choice

MET·RO·POL·I·TAN

/,metrə'pälətn /

*Adjective*

.....

**Def:** sophistication, fashionable taste,  
or civilized manners





7 • METRO







With a fluid grace, the metropolitan man or woman transforms from a refined professional in the daytime to a glamorous trendsetter at night. Our Metro line emulates this grace through sparkling crystal finials, contemporary silhouettes, and sleek plated finishes.

.....

## C

# ONTENTS

Chapter Cover	• 82
Contents	• 84
Finials	• 86
End-caps & Collars	• 87
Rods	• 87
Brackets	• 88
Rings	• 89
Elbows	• 89
Wands	• 89
Tiebacks	• 89

# METRO FINIALS

Finials are shown at 25% scale for reference purposes and include fluted base dimensions where applicable.

The cost of Low-Profile collars are factored into the price of each finial.

## CRYSTAL FINIALS



### Bauhaus

Shown In Chrome & Soft Brass

740210 • 1 1/4" x 7/8"

740211 • 1 1/2" x 1 1/4"



### Brilliance w/ Fluted Base

Base shown in Brushed Nickel

740202 • 3 3/8" x 2 3/8"



### Facets w/ Fluted Base

Base shown in Chrome

740204 • 2 7/8" x 2 3/8"



### Marquesa w/ Fluted Base

Base shown in Brushed Nickel

740203 • 3 3/8" x 2 3/4"



### Paragon w/ Fluted Base

Base shown in Soft Brass

740201 • 2 3/8" x 2 3/4"

## METAL FINIALS



### Aerie

Shown in Brushed Nickel

740209 • 2 3/4" x 1 5/8"



### Arroyo

Shown in Soft Brass

740205 • 3" x 2"



### Cadre

Shown in Gloss Black

740207 • 2 1/8" x 1 7/8"



### Cannonball w/ Fluted Base

Shown in Chrome

740208 • 2 1/4" x 1 1/2"



### Grant

Shown in Gloss Black

740212 • 1 3/8" x 7/8"



### Panier w/ Fluted Base

Shown in Gloss Key White

740206 • 4 1/4" x 2 5/8"



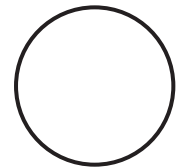
# METRO RODS



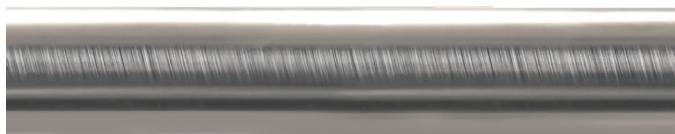
## 7/8" Round Rod

Shown in Chrome

740101 • 63" (Heavy) & 73" (Light) Bracket to Bracket Maximum



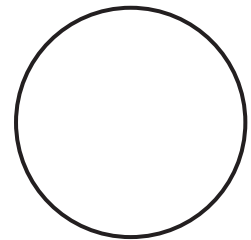
Actual Size



## 1 1/4" Round Rod

Shown in Brushed Nickel

740102 • 78" (Heavy) & 90" (Light) Bracket to Bracket Maximum



Actual Size

### Bracket to Bracket Maximum

The Bracket to Bracket maximum is the maximum distance in inches between brackets before an additional bracket must be added to avoid unwanted bowing or sagging. The maximum depends on the weight of the treatment fabric and the rod diameter. Some rods have the same maximum regardless of fabric weight.

**Light Treatments** include unlined, sheer, and lightweight fabric  
**Heavy Treatments** include lined, blackout, or upholstery fabric

# COLLARS & END-CAPS



## Low-Profile End-Caps & Collars

Shown in Brushed Nickel  
Available in 7/8" & 1 1/4"

# METRO BRACKETS

## STRAP STYLE



### Adjustable Strap Bracket

Available with adjustable clearances only

740303 • 7/8" Round • 3" - 4" Clearance

740304 • 1 1/4" Round • 2 7/8" - 3 7/8" Clearance



Vertical Bases  
also available!

### Horizontal Adjustable Bypass Bracket

Available with adjustable clearances only

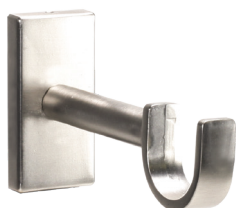
740305 • 7/8" Round • 3" - 4" Clearance

740313 • 7/8" Round • 4" - 5" or 5" - 6" Clearance

740306 • 1 1/4" Round • 3" - 4" Clearance

740315 • 1 1/4" Round • 4" - 5" or 5" - 6" Clearance

## MODERN STYLE



### EZ Mount Bracket

Available with standard clearances only

040313 • 7/8" Round • 4" Clearance

040314 • 1 1/4" Round • 3 7/8" Clearance

Clearances include thickness of base plate



### Brooklyn Bracket

Available with standard clearances only

740301 • 7/8" Round • 2 7/8" Clearance

740302 • 1 1/4" Round • 2 7/8" Clearance



### Double Brooklyn Bracket

Available with standard clearances only

740307 • 7/8" & 7/8" Round • 2" & 4 1/2" Clearance

740308 • 1 1/4" & 1 1/4" Round • 2" & 5 1/2" Clearance

## INSIDE MOUNT



### Enclosed Inside Mount Bracket

Requires rod length deductions

740309 • 7/8" Round

740310 • 1 1/4" Round



# METRO RINGS & ACCESSORIES

## RINGS



### Extra Small Ring

Shown in Chrome

740401 • ID 1 1/4"  
• OD 1 3/4"

740403 • Bypass



### Small Ring

Shown in Brushed Nickel

740402 • ID 1 7/8"  
• OD 2 3/8"

740404 • Bypass



### Acrylic Ring

040505 • ID 1 7/8"

• OD 2 3/8"

5/8" wide x 3/16" thick

## ELBOWS



### Adjustable Elbow

Shown in Brushed Nickel (R) & Chrome (L)

740905 • 7/8" Round

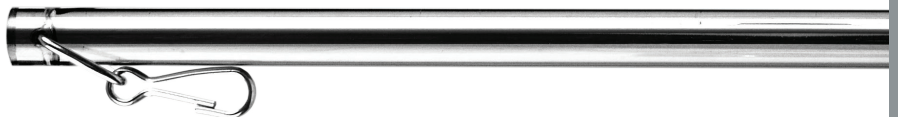
740906 • 1 1/4" Round

## WANDS

### Plated Wand w/ Clip

Shown in Chrome

36", 48", & 60"



## TIEBACK ARMS



### Foldaway Adjustable Tieback Arm

Shown in Gloss Black

740701 • 11" Long • 4 1/4" Clearance

Comes with a 2 3/4" round base

Our Foldaway Adjustable Tieback is both a stylish and practical choice for most treatment designs. Available in both plated or painted finishes, it allows for different clearances, and the arm locks in place for stability. The foldaway function keeps it flush against the wall when not in use.





# 8 • ROMAN BLINDS



# CLAS•SIC

/ 'klasik /

*Adjective*

.....

**Def:** judged over a period of time to be of the highest quality and outstanding of its kind

It is said the original Roman Blinds were used to keep out the dust from the construction of the Colosseum. Like the Colosseum, Roman Blinds are still around today. Popular and affordable, including both motorized and hand-drawn versions, Roman Blinds are a designer's 8th Wonder of the World.

.....

## C

# ONTENTS

Chapter Cover	• 90
Contents	• 92
RBS Assemblies	• 94
Headrails	• 96
Assembly	
Components	• 97
Workroom	
Components	• 98
Motorized	
Components	• 99





# ROMAN BLIND ASSEMBLIES

Our Roman Blind assemblies are a quick and easy way to bring that classic and clean feel to any design. They come in two sizes: Standard and Extra Large, with motorized versions available.



## FEATURES:

- Clean, self-contained, extruded aluminium Headrail with white powder coat and integrated Velcro
- Simple wall or ceiling mount installation and patented pull up drums for smooth operation
- **Maximum Shade Weight:** Heavy Duty 1:4 Gear ratio will hold up to 18# with RBS Standard and 24# with RBS-XL; 10# with Plug & Play and 15# with Lithium battery motorized rods.
- **Maximum Shade Size:** 228" (19') x 144" (12') as long as fabric is under weight recommendation
- **Minimum RBS Assembly Width:** 10" for non-motorized assemblies, 18" for motorized assemblies.
- **Standard Assemblies include:** Headrail, Drive Rod, Control Unit and End Cap, Cord Drums, Shade Leveler, Swivel Wall or Swivel Ceiling Brackets, Bead Chain Loop, and Universal Tension Device
- **Motorized Assemblies include:** Headrail, Drive Rod, Control Unit and End Cap, Cord Drums, Shade Leveler, Swivel Wall or Swivel Ceiling Brackets, Motor, Power Supply and Cords or Battery and Charger, and Remote.
- **Component Color:** Chain comes in white, beige, silver, and bronze (Silver and Bronze will require an upcharge). The tension device comes in white, beige, clear, and brown.



# HAND DRAWN

## Standard RBS Assembly

Available in White only

331001 • Base charge for first 36"

331003 • Per inch after 36"

1 3/8" x 1 1/2" Headrail

Holds up to 18# of fabric



## RBS XL Assembly

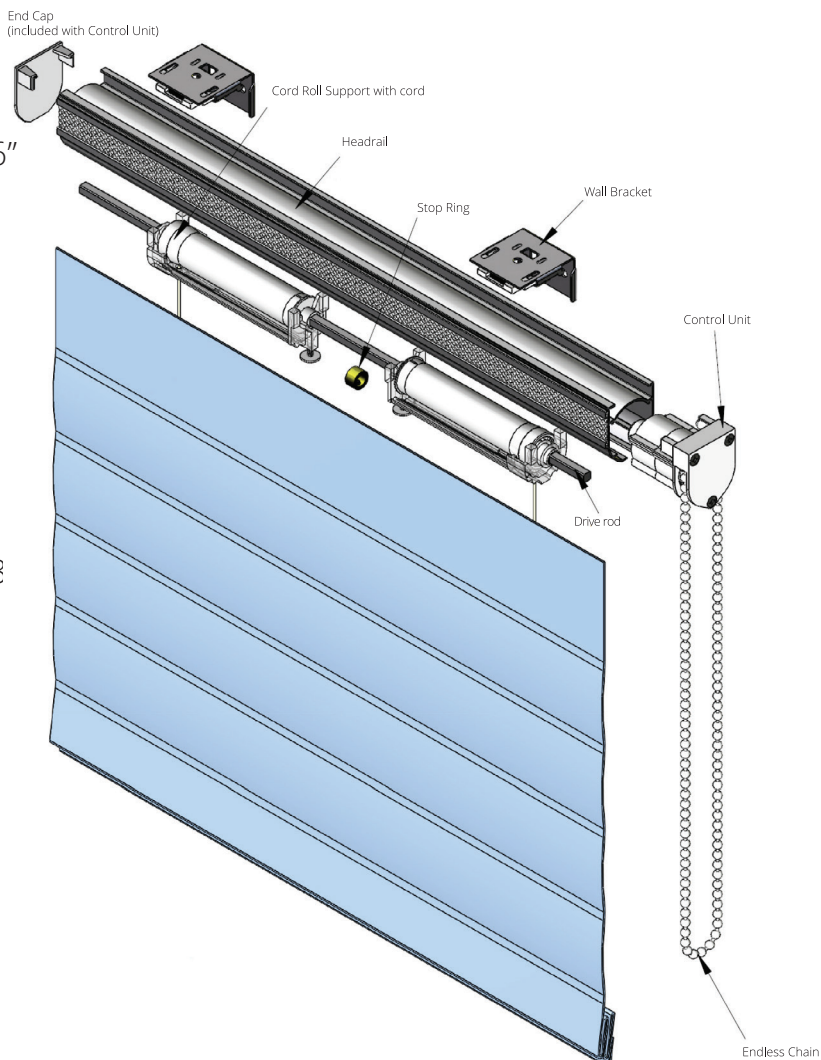
Available in White only

331004 • Base charge for first 48"

331005 • Per inch after 48"

2" x 2 1/4" Headrail

Holds up to 24# of fabric



# MOTORIZED



## Plug & Play Motorized RBS Assembly

Available in White only

331002 • Base charge for first 36"

331003 • Per inch after 36"

Holds up to 10# of fabric

### Includes:

- Standard RBS assembly base
- RBS Tubular 24V Motor
- Power Supply and 7 foot cord
- Remote control
- Ceiling or Wall Mount Brackets



## Lithium Battery Motorized RBS Assembly

Available in White only

331006 • Base charge for first 36"

331003 • Per inch after 36"

Holds up to 15# of fabric



**7 Year  
Warranty**

### Includes:

- Standard RBS assembly base
- RBS Lithium Battery Motor
- Lithium Battery and Charger
- Remote control
- Ceiling or Wall Mount Brackets

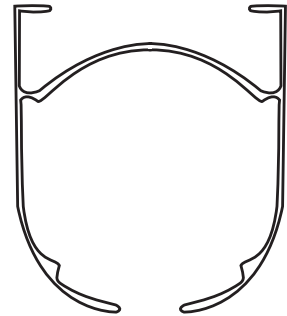
# COMPONENTS

## HEADRAIL



### RBS Headrail

Available in White only  
33-41019-25 • 1 3/8" x 1 1/2"

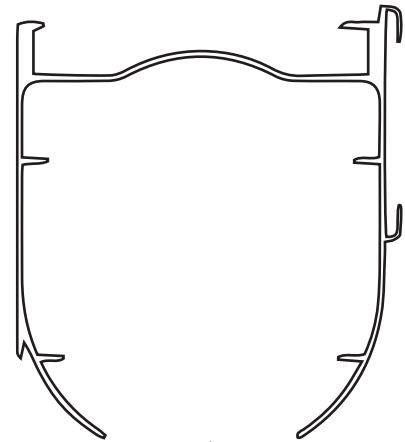


Actual Size

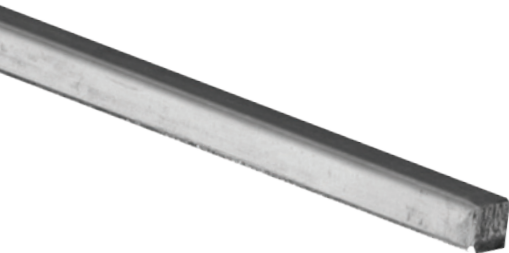


### RBS XL Headrail

Available in White only  
33-44019-25 • 2" x 2 1/4"



Actual Size



### Aluminum Drive Rod

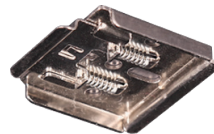
Available in Silver only  
33-41119-90 • 1/4" x 1/4"

## BRACKETS



### RBS Swivel Ceiling Bracket

Available in White only  
33-43003-25



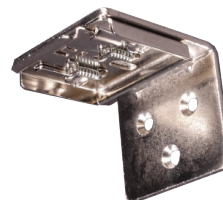
### RBS XL Ceiling Bracket

Available in Silver only  
33-44004-90



### RBS Swivel Wall Bracket

Available in White only  
33-43202-25

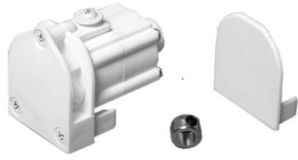


### RBS XL Wall Bracket

Available in Silver only  
33-44033-90



# COMPONENTS



## Control Unit

Available in White only  
33-42311-25 • RBS  
33-44311-25 • RBS XL  
Comes with end-cap & retaining ring



## Cord Roll Support

Available in White only  
33-49003-25 • RBS  
33-44003-25 • RBS XL



## Shade Leveler

Available in White only  
33-49008-25



## Plastic Bead Chain

Available in White or Beige  
Comes in 29", 39", 49",  
59", 69", 79", 89", & 99"  
**Note:** 89" & 99" not available in Beige



## Metal Bead Chain

Available in Silver or Bronze  
Comes in 29", 39", 49",  
59", 69", 79", 89", & 99"  
Can be cut to any size below 99" upon request  
Upcharge required when purchased in an assembly



## Tension Device

Available in White, Beige, Brown, & Clear  
330904 • 1 per assembly

### Safety Tip:

Attach tension device to the end of the cord and then to a door or window to keep the chain secure.



## Counterweight Bar

33-49005 • Per Foot



## Fiberglass Spines

Available in White only  
33-49006-25 • Per Foot

## SAFE-T-SHADE



### Short Stack Ring Lock\*

Available in Clear plastic only  
 330905 (-0.9, - 1.4) • 100 pcs  
 330906 (-0.9, - 1.4) • 1,000 pcs  
 Available in 0.9 and 1.4 mm



### Forever Clear Rings

Available in Clear Plastic only  
 330907 • 1,000 pcs  
 330908 • 10,000 pcs



### Level Locks

Available in Clear Plastic only  
 330909 • 100 pcs

\* Safe-T-Shade Ring Locks are lift cord ring locks for roman shades and woven woods independently tested by Bureau Veritas to meet safety standards.

## VALANCE



### Valance Profile w/ Velcro

Available in White only  
 33-3116-25 • Per Foot



### Valance Brackets

Available in White only  
 33-49090-25  
 Use 1 per 2' - 2 1/2"



### Valance Corners

Available in White only  
 33-49091-25  
 2 per Valance

## REMOTES & WALL SWITCHES



### Diamond Remote

Available in White or Black  
 330914-130 • White  
 330914-136 • Black  
 6+1 Channels  
 45' Range  
 Holder included



### Lithium Motor Remote

Available in White only  
 33-62911-25  
 15 Channels  
 Holder included



### Diamond Wall Switch

Available in White or Black  
 330915-130 • White  
 330915-136 • Black  
 2 Channels  
 Works with all FDH systems



# RBS MOTORS & POWER SUPPLIES

If you are in the market for a motorized Roman Blind System, Helser Brothers offers two distinctive yet comparable choices. Our tried and true Plug & Play motor for reliability and our new lithium battery powered motor for those who crave the cutting edge.

## MOTORS



### Lithium Battery Tubular Motor & Lithium Battery Adapter w/ Cord

Available in White only

33-62910-25 • Motor

33-62912-25 • Battery Charger & Adapter

See below for info



### Plug & Play Tubular Motor & Power Supply w/ Cord

Available in White only

330910 • Motor

330913-25 • Power Supply

See Below for info

### Lithium Battery Tubular Motor

- 24V Lithium Battery powered Motor
- Motor is 8 ½" Long
- Lifts 15# of fabric
- Battery charger is 9 ½" long
- Cord is 6' long
- Battery Life is 400 full revolutions
- Charger can be put on front or back of assembly, or attached to the wall - Adds 1 ⅜"

### Plug & Play Tubular Motor

- 24V Plug & Play double shaft motor
- Motor is 8 ½" Long
- Lifts 10# of fabric
- Cord is 7' long from motor to wall & includes length of power supply

RE•FINED

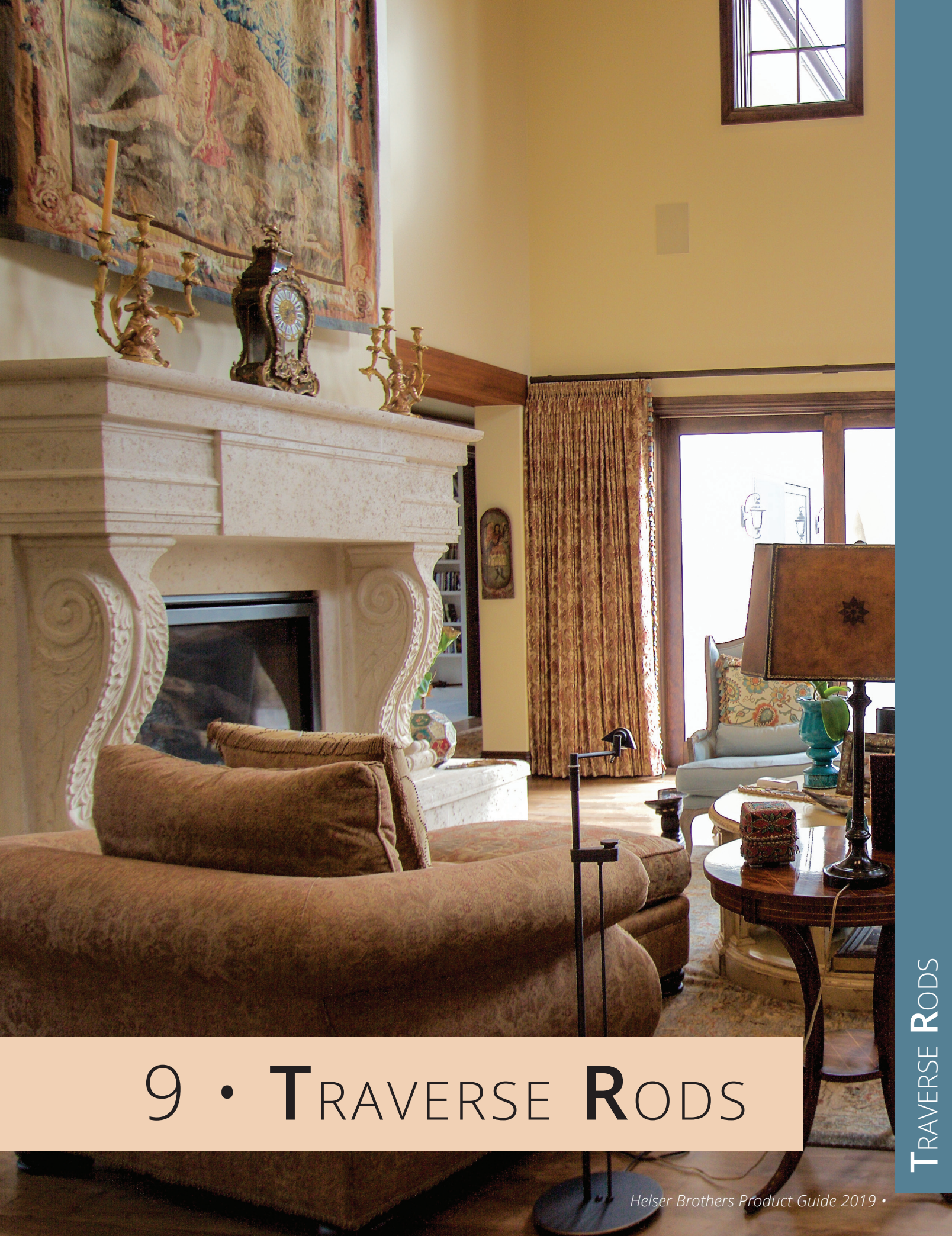
/rə'fīnd /

*Adjective*

.....

**Def:** elegant and cultured in appearance,  
manner, or taste





# 9 • TRAVERSE RODS







Whether they are being thrown open in the morning or drawn tight at night, our traversing rods offer a smooth and effortless operation. The option to use almost any finial and our hand-painted or plated finishes make this the go-to solution for hand-drawn traverse rods.

.....

## CONTENTS

Chapter Cover	• 100
Contents	• 102
Ruffino Traverse Assemblies	• 104
Metro Traverse Assemblies	• 105
Traverse Rods	• 106
À La Carte Components	• 107
Miscellaneous	• 109
Brackets	• 110

# RUFFINO TRAVERSE ASSEMBLIES

Our traverse assemblies come in three sizes (1 1/8", 1 1/4", & 1 3/4") and three configurations (Standard & two types of Ripplefold). The rod, brackets, and needed traversing components are all included in the price. Just add your desired finials and wands.



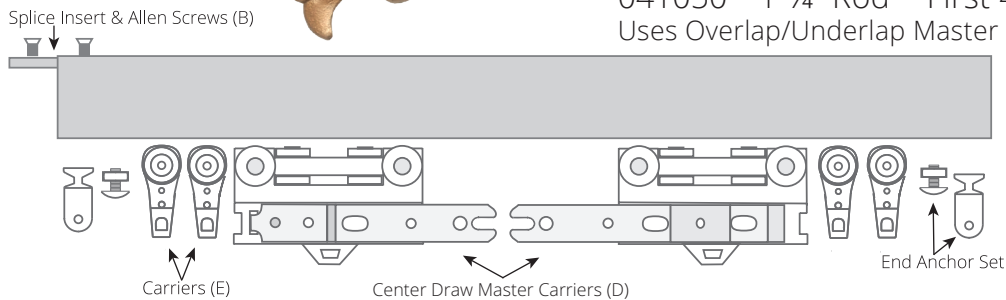
## Standard Ruffino Assembly

041054 • 1 1/8" Rod • First 48" (4')

041046 • 1 1/4" Rod • First 48" (4')

041050 • 1 3/4" Rod • First 48" (4')

Uses Overlap/Underlap Master Carriers



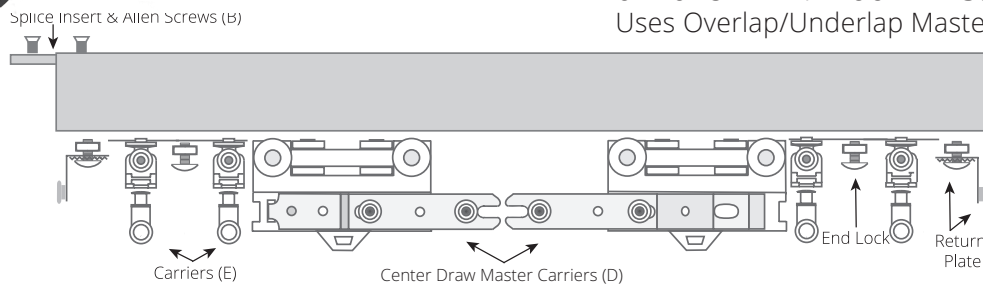
## Ripplefold Ruffino Assembly

041056 • 1 1/8" Rod • First 48" (4')

041044 • 1 1/4" Rod • First 48" (4')

041048 • 1 3/4" Rod • First 48" (4')

Uses Overlap/Underlap Master Carriers



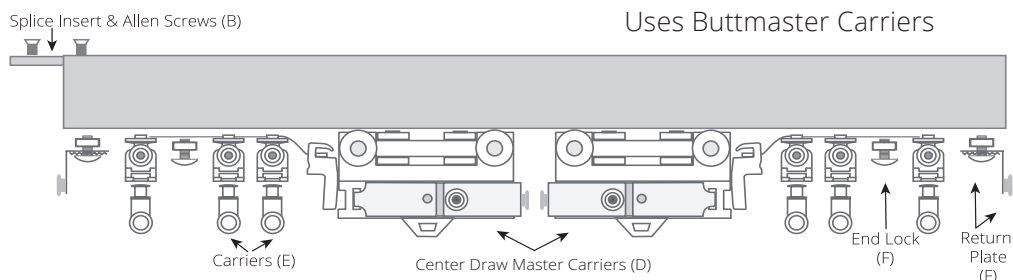
## Ripplefold Ruffino Assembly

041058 • 1 1/8" Rod • First 48" (4')

041052 • 1 1/4" Rod • First 48" (4')

041053 • 1 3/4" Rod • First 48" (4')

Uses Buttmaster Carriers



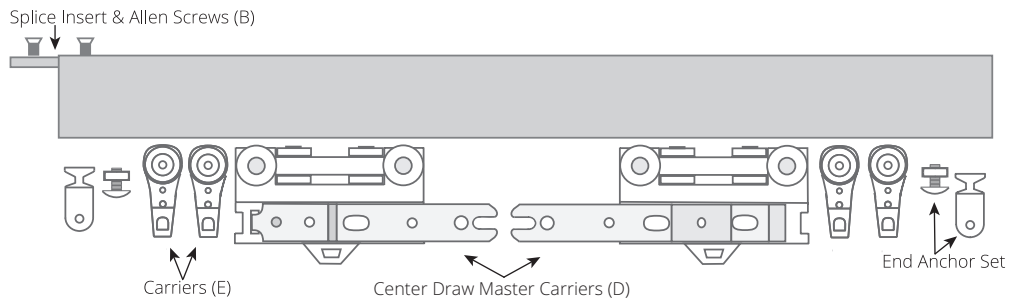


# METRO TRAVERSE ASSEMBLIES

Our Metro traverse assemblies come in one size ( 1 1/8" ) and three configurations (Standard & two types of Ripplefold). The rod, brackets, and needed traversing components are all included in the price. Just add your desired finials and wands.

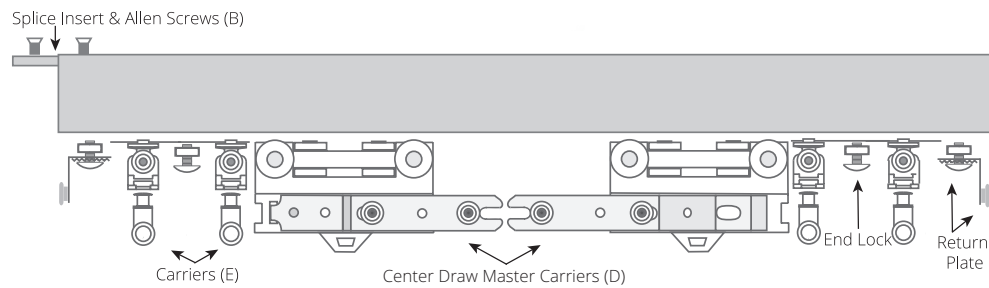
## Standard Metro Assembly

741060 • 1 1/8" Rod • First 48" (4')  
Uses Overlap/Underlap Master Carriers



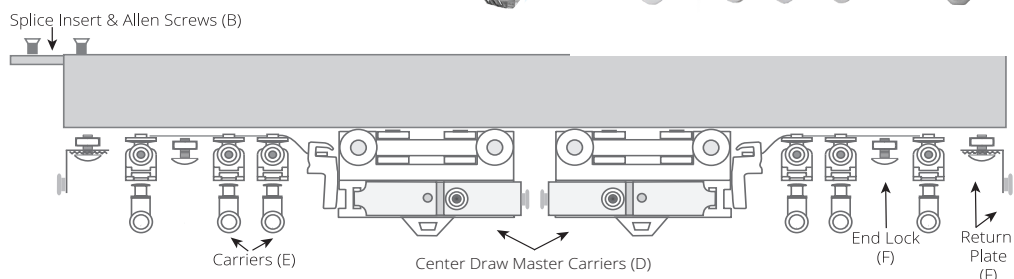
## Ripplefold Metro Assembly

741062 • 1 1/8" Rod • First 48" (4')  
Uses Overlap/Underlap Master Carriers



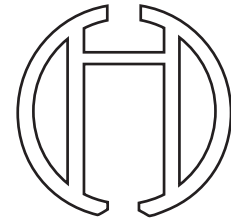
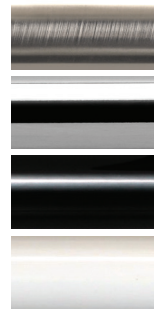
## Ripplefold Metro Assembly

741064 • 1 1/8" Rod • First 48" (4')  
Uses Buttmaster Carriers



# TRAVERSE RODS

Available in any HB painted metal finish as well as the following:



Actual Size

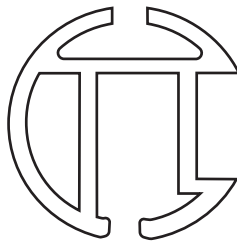
## 1 1/8" Metro & Ruffino Track

Shown in Brushed Nickel & Monument Bronze

74-B808 • Metro

040117 • Ruffino

36" (Heavy) & 48" (Light) Bracket to Bracket Maximum

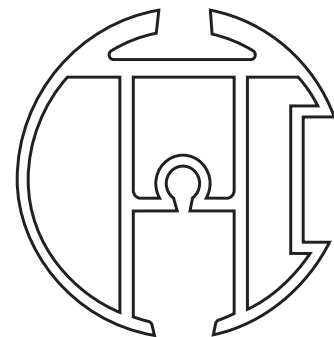


Actual Size

## 1 1/4" Ruffino Track

Shown in Monument Bronze

040111 • 36" (Heavy) & 48" (Light) Bracket to Bracket Maximum



Actual Size

## 1 3/4" Ruffino Track

Shown in Monument Bronze

040112 • 36" (Heavy) & 48" (Light) Bracket to Bracket Maximum

### Bracket to Bracket Maximum

The Bracket to Bracket maximum is the maximum distance in inches between brackets before an additional bracket must be added to avoid unwanted bowing or sagging. The maximum depends on the weight of the treatment fabric and the rod diameter. Some rods have the same maximum regardless of fabric weight.

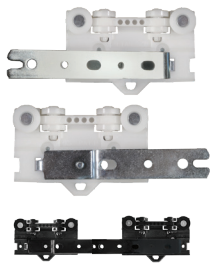
**Light Treatments** include unlined, sheer, and lightweight fabric

**Heavy Treatments** include lined, blackout, or upholstery fabric



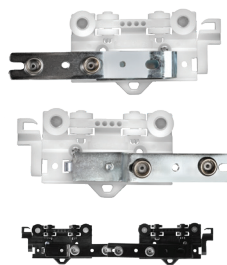
# À LA CARTE COMPONENTS

## MASTER CARRIERS



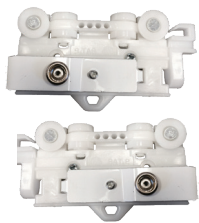
### Multi-Functional 8-Wheeled Master Carrier

Available in White and Black  
04-52502 (-25,-59) • ROL  
04-52504 (-25,-59) • LUL  
For standard traverse



### Multi-Functional 8-Wheeled Master Carrier w/ 2 Snaps

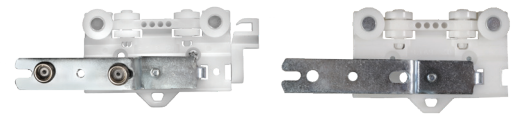
Available in White and Black  
04-52502 (-25a,-59a) • ROL  
04-52504 (-25a,-59a) • LUL  
For Ripplefold traverse



### Multi-Functional 8-Wheeled Buttmaster Carrier w/ 3 Snaps

Available in White only  
04-52411-25 • Right Butt  
04-52412-25 • Left Butt  
For Ripplefold traverse

To accommodate one-way-right draws, any Left Underlap (LUL) master carrier can be made into a Right Underlap (RUL) master carrier upon request.



## CARRIERS



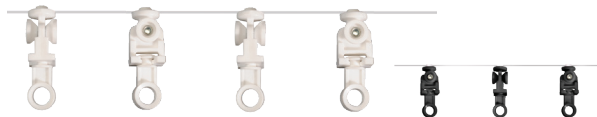
### Slimline Ball-Bearing Carrier

Available in White, Black, & Brown  
04-52002 (-25,-59,-65)  
For standard traverse



### Single Snap Carrier

Available in White & Black  
04-2004 (-25,-59)  
For Ripplefold Traverse



### Wheeled Connected Snap Carrier

Available in White & Black  
Available in 60%, 80%, 100%, & 120% Fullness  
For Ripplefold traverse

## SNAPTAPE



### 1" Snap Tape

Available in White only  
04-9003-25 • per snap or roll  
Roll has 840 Snaps  
For Ripplefold Traverse

## END PIECES



### End Lock

Available in Silver only  
04-52307-90  
For all traverse



### E-Slide

Available in White, Black, & Brown  
04-52003 (-25,-59,-65)  
For standard traverse



### End-Point Anchor

Available in White, Black, & Brown  
040418 (-25,-59,-65)  
For standard traverse



### Midpoint Anchor

Available in White, Black, & Brown  
040419 (-25,-59,-65)  
For standard traverse



### Return Plate & Snap

Available in White only  
04-52302-25 • Right  
04-52303-25 • Left  
For Ripplefold Traverse

Easyflex provides workrooms with an easier and more efficient way to layout, sew, and install their ripplefold drapes through the use of a flexible tape and hook system.

Image courtesy of Finishing Touches (CO)



## EASYFLEX



### Easyflex Tape

Available in White only  
04-9036-00 • per yd  
For Ripplefold Traverse



### Easyflex Hook

Available in White only  
04-9037-25 • per hook/box  
For Ripplefold Traverse



### Easyflex End Hook

Available in White only  
04-9039-25 • per hook/box  
For Ripplefold Traverse

#### Important Note:

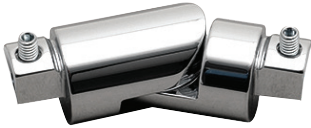
Instructions on how to layout, assemble, and install Easyflex can be found in your Price Guide in Appendix B.

Digital copies are available upon request.



# MISCELLANEOUS

## ELBOWS



### 1 1/8" Adjustable Metro & Ruffino Elbow

Shown in Chrome

040982 • Ruffino  
74-B122928 • Metro



### Adjustable Ruffino Elbow

Shown in Monument Bronze

040980 • 1 1/4"  
040981 • 1 3/4"

## END-CAPS & COLLARS



### 1 1/8" Low-Profile Metro & Ruffino End-Caps & Collars

Shown in Gloss Black

Available in painted and plated finishes



### 1 1/4" Low-Profile Ruffino End-Caps & Collars

Shown in Coal

Available in painted metal finishes only



### 1 3/4" Low-Profile Ruffino End-Caps & Collars

Shown in Coal

Available in painted metal finishes only

## TRACK SPLICE



### Metro & Ruffino Track Splice

040936-90 • All rod sizes

Available in silver only

# TRAVERSE BRACKETS



## 1 1/8" Vertical Mount Adjustable Metro & Ruffino Bracket

Available with adjustable returns only

0403146 • 3 5/8" - 4 5/8" Return • Ruffino Painted  
740312 • 3 5/8" - 4 5/8" Return • Metro Plated



## 1 1/8" Horizontal Mount Adjustable Metro & Ruffino Bracket

Available with adjustable returns only

0403147 • 3 5/8" - 4 5/8" Return • Ruffino Painted  
740311 • 3 5/8" - 4 5/8" Return • Metro Plated



## Standard Ruffino Bracket

Available with both standard & custom returns

040353 • 3 1/2" Return  
040377 • Custom Return  
Use with 1 1/4" & 1 3/4" Ruffino rods



## Adjustable Ruffino Bracket

Available with multiple adjustable returns

040364A, B, or D  
Use with 1 1/4" & 1 3/4" Ruffino rods





### Flush Mount Ceiling Ruffino Bracket

Mounts flush to ceiling

040355 • Use with 1 ¼" & 1 ¾" Ruffino rods

---



### Drop Mount Ceiling Ruffino Bracket

Available with custom drops only

040376 • Custom Drop

Use with 1 ¼" & 1 ¾" Ruffino rods

---



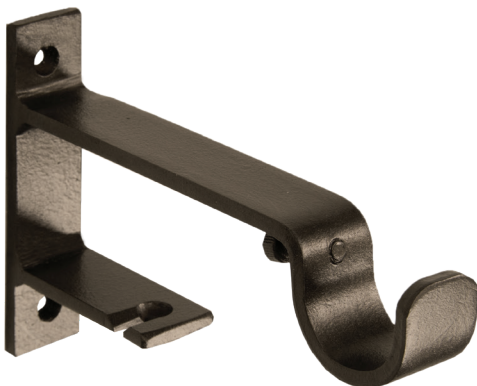
### Double Ruffino Bracket

Available with custom returns only

040354 • Custom Return

Use with 1 ¼" & 1 ¾" Ruffino rods

---



### Hybrid Bracket for Ruffino & Iron/Wood Rod

Available with custom returns only

040388 • Use with 1 ¼" Iron Rod

040389 • Use with 1 ¾" Iron Rod

040390 • Use with 2" Iron/Wood Rod

040395 • Use with 2 ¾" Wood Rod

Use with 1 ⅝" & 1 ¼" Ruffino rods





# 10 • TRAVERSE TRACKS & MOTORIZATION



LUXE  
/ ləks /  
*Adjective*

.....

**Def:** expensive and of high quality; luxurious

Imagine you are preparing for an important meeting, starting to watch a movie, or even wooing that special someone. Who wants to ruin that moment by stopping to draw the drapes? With a Helser Brothers' motorized system, it won't be you.

.....

## CONTENTS

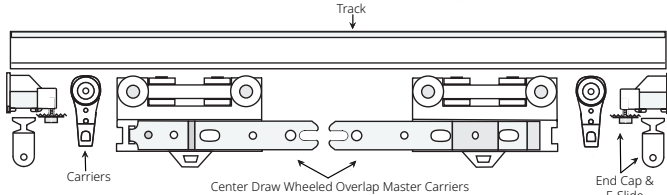
Chapter Cover	• 112
Contents	• 114
Track Assemblies	• 116
Wood Fascias	• 117
C-Rings	• 118
Track	• 118
Track à La Carte	
Components	• 119
Track Brackets	• 121
Motorized Assemblies	• 122
Motorized à La Carte	
Components	• 124
Motorized	
Accessories	• 126
Motorized Brackets	• 128







# TRACK ASSEMBLIES & À LA CARTE COMPONENTS



## Standard Track Assembly

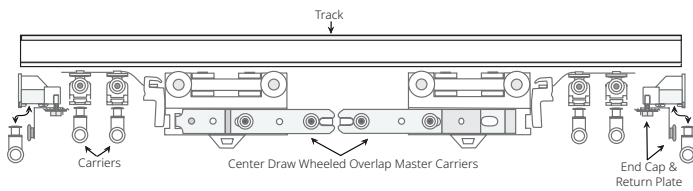
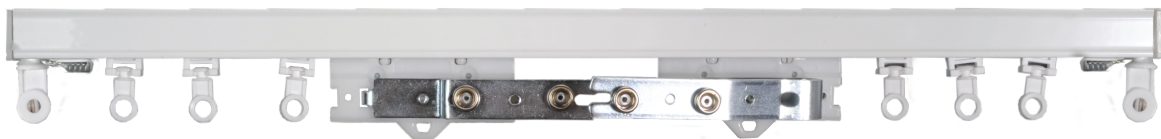
Available in White, Black, Brown, & Silver\*

201001 • Base Charge for up to 48" (4')

201002 • Per foot after first 48"

Comes with Overlap/Underlap Master Carriers

\* Brown & Silver finish not available for all components



## Ripplefold Track Assembly

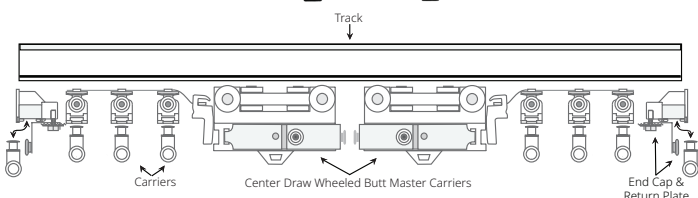
Available in White, Black, Brown, & Silver\*

201003 • Base Charge for up to 48" (4')

201004 • Per foot after first 48"

Comes with Overlap/Underlap Master Carriers

\* Brown & Silver finish not available for all components



## Ripplefold Track Assembly

Available in White, Black, Brown, & Silver\*

201005 • Base Charge for up to 48" (4')

201006 • Per foot after first 48"

Comes with Buttmaster Carriers

\* Brown & Silver finish not available for all components





Use one of our beautiful routed Isabella wood rods to add a touch of old world class to your modern CS track assembly.

We also offer a rod and ring assembly that gives you the elegance of the traditional wood rod treatment with the ease of a traverse rod, as seen on the left.

**Left:** Image courtesy of Finishing Touches, Inc. (CO)

## WOOD FASCIA



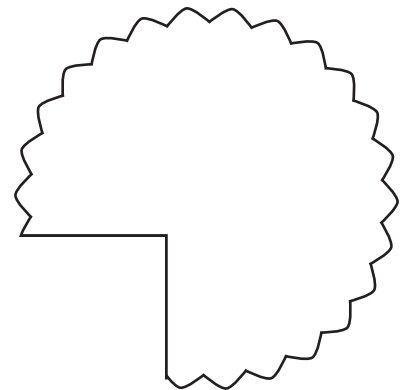
### 2" Routed Wood Rod

Shown in Monument Bronze & English Walnut

200103-TRK • Smooth

200104-TRK • Fluted

24" (Heavy) & 36" (Light) Bracket to Bracket Maximum\*



Actual Size



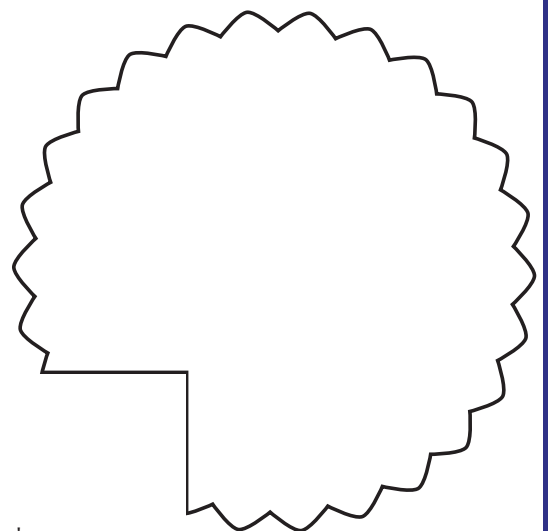
### 2 3/4" Routed Wood Rod

Shown in Chelsea Bisque & Heirloom

270103-TRK • Smooth

270104-TRK • Fluted

24" (Heavy) & 36" (Light) Bracket to Bracket Maximum\*



Actual Size

\* Bracket to Bracket Maximum is based on the CS track, not the wood fascia. See next page for Bracket to Bracket Maximum explanation.

## C-RINGS



### 2" Cut Wood Ring

Shown in Chelsea Bisque  
200401-CUT • ID 2 7/8" • OD 3 7/8"

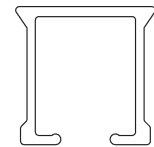
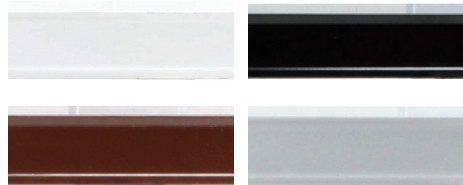


### 2 3/4" Cut Wood Ring

Shown in English Walnut  
270401-CUT • ID 3 1/2" • OD 5"

C-Rings are meant to be used with the CS Track and Wood Rod with Rings assembly. They can only be attached to C-Ring Carriers & Master Carriers.

## TRACK



Actual Size

### CS 510 Heavy Duty Track

Available in White, Black, Brown, & Silver

20-51020-25 • 24" (Heavy) & 36" (Light) Bracket to Bracket Maximum  
20-51016 (-59, -65, -90) • 24" (Heavy) & 36" (Light) Bracket to Bracket Maximum



### CS Track Splice

Available in White, Black, Brown, & Silver

20-3903 (-25,-59,-65,-90)

Use to connect spliced track

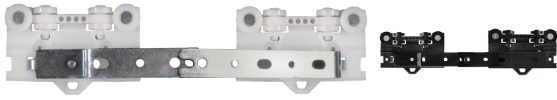
### Bracket to Bracket Maximum

The Bracket to Bracket maximum is the maximum distance in inches between brackets before an additional bracket must be added to avoid unwanted bowing or sagging. The maximum depends on the weight of the treatment fabric and the rod diameter. Some rods have the same maximum regardless of fabric weight.

**Light Treatments** include unlined, sheer, and lightweight fabric  
**Heavy Treatments** include lined, blackout, or upholstery fabric

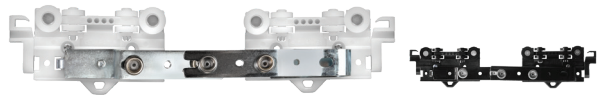


# MASTER CARRIERS



## Multi-Functional 8-Wheeled Master Carrier

Available in White & Black  
 20-52502 (-25, -59) • ROL  
 20-52504 (-25, -59) • LUL  
 For standard traverse



## Multi-Functional 8-Wheeled Master Carrier w/ 2 Snaps

Available in White & Black  
 20-52502 (-25a, -59a) • ROL  
 20-52504 (-25a, -59a) • LUL  
 For Ripplefold traverse



## Multi-Functional, 8-Wheeled Buttmaster Carrier w/ 3 Snaps

Available in White only  
 20-52411-25 • Right Butt  
 20-52412-25 • Left Butt  
 For Ripplefold traverse



## C-Ring Master Carrier

Available in White & Brown  
 20-52405 (-25, -65) • ROL  
 20-52406 (-25, -65) • LUL

# CARRIERS



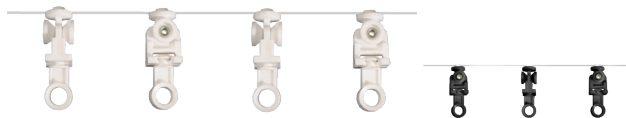
## Slimline Ball-Bearing Carrier

Available in White, Black, & Brown  
 20-52002 (-25, -59, -65)  
 For standard traverse



## Single Snap Carrier

Available in White & Black  
 20-2004 (-25, -59)  
 For Ripplefold Traverse



## Wheeled Connected Snap Carrier

Available in White & Black  
 Available in 60%, 80%, 100%, & 120% Fullness  
 For Ripplefold traverse



## C-Ring Carrier

Available in White, Black, & Brown  
 20-52007 (-25,-59,-65)

C-Ring Carriers are meant to be used with the CS Track & Wood Rod with Rings assembly.

## END PIECES & RETURNS



### End Lock

Available in Silver only  
20-52307-90  
For all traverse



### E-Slide

Available in White, Black, & Brown  
20-52003 (-25, -59, -65)  
For all traverse



### CS Track End-Cap w/ E-Slide

Available in White, Black, Brown, & Silver  
20-52301 (-25, -59, -65, -90)  
For standard traverse



For one-way draws, request the E-Slide to be removed on the draw side end-cap.



### Return Plate & Snap

Available in White only  
20-52302-25 • Right  
20-53203-25 • Left  
For Ripplefold Traverse



### Reversible Return Plate

Available in White only  
20-2308-25  
For Ripplefold Traverse

## SNAP & EASYFLEX TAPE



### 1" Snap Tape

Available in White only  
20-9003-25 • per snap/roll  
840 Snaps per Roll  
For Ripplefold Traverse



### Easyflex Tape

20-9036-00 • per yd  
For Ripplefold Traverse

## EASYFLEX HOOKS



### Easyflex Hook

Available in White only  
20-9037-25 • per hook/box  
For Ripplefold Traverse



### Easyflex End Hook

Available in White only  
20-9039-25 • per hook/box  
For Ripplefold Traverse

Check out the 'Easyflex Assembly Instructions' sheet in Appendix B of your Price Guide for information on how to properly assemble an Easyflex traverse system.



# TRACK BRACKETS



## Smart Klick Ceiling Bracket

Available in White, Black, Brown, & Silver  
20-3003 (-25, -59, -65, -90)  
For CS/FMS Track



## 3" Smart Klick Wall Bracket

Available in White, Black, Brown, & Silver  
20-53202 (-25, -59, -65, -90)  
For CS/FMS Track



## 6" Smart Klick Double Wall Bracket

Available in White, Black, Brown, & Silver  
20-53206 (-25, -59, -65, -90)  
For CS/FMS Track



## 3" Wood Rod Traverse Wall Bracket

Available in White, Black, Brown, & Silver  
20-3280 (-25, -59, -65, -90)  
For CS/FMS Track w/ Wood Fascia



## 6" Wood Rod Traverse Double Wall Bracket

Available in White, Black, & Brown  
20-3281 (-25, -59, -65)  
For CS/FMS Track w/ Wood Fascia



## Petite Isabella Splice Bracket

Shown in Monument Bronze  
200312 • 2" Round • 2 1/8" Clearance  
200313 • 2 3/4" Round • 2 1/8" Clearance  
Available with both custom and standard clearances  
For use with CS track and Isabella Wood Fascias  
Only available in Painted Metal finishes

# MOTORIZED ASSEMBLIES

## NON-DECORATIVE MOTORIZED

**10 Year  
Warranty!**



### Motorized FMS Track Assembly - Eco-Shuttle Motor

Motor available in White only

651002 • Base Charge for up to 48" (4')

651004 • Per foot after first 48"

Holds up to 100# of Fabric

**Forest**<sup>®</sup>  
*Eco Shuttle*

### Motorized FMS Track Assembly - Eco-Shuttle HD Motor

Motor available in White & Black

651003 • Base Charge for up to 48" (4')

651004 • Per foot after first 48"

Holds up to 160# of Fabric

**Forest**<sup>®</sup>  
*Eco Shuttle HD*

Choosing a motor can be a daunting task. To make it easier, consider what the treatment is used for when making your selection.

The Eco-Shuttle is great for light weight treatments with normal use.

The Eco-Shuttle HD is better for Heavy-Duty treatments with extensive use.

The Z-Wave is great for both heavy-duty fabric and use, and can be integrated with smarhubs and phone apps.

### Motorized FMS Track Assembly - Z-Wave Motor

Motor available in White only

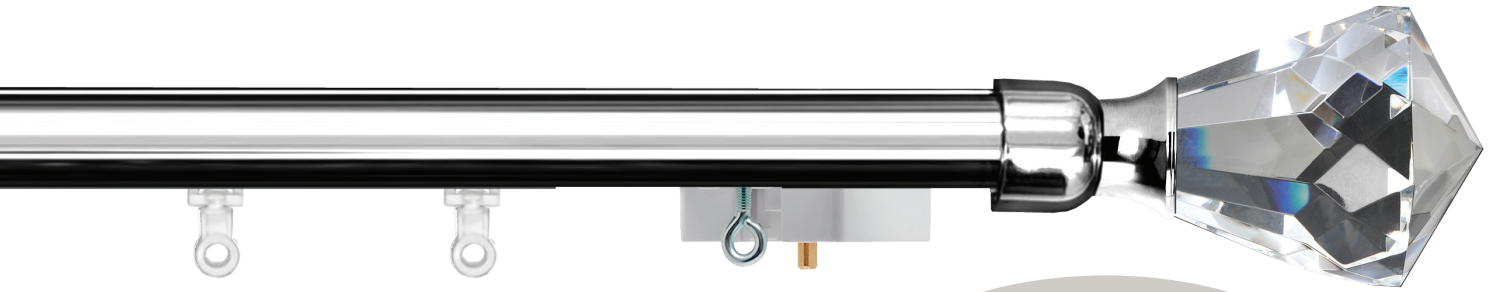
651110 • Base Charge for up to 48" (4')

651004 • Per foot after first 48"

Holds up to 160# of Fabric

**Forest**<sup>®</sup>  
*Z-Wave Shuttle*





**10 Year  
Warranty!**

## DECORATIVE MOTORIZED

### Decorative Motorized FMS Track Assembly - Eco-Shuttle Motor

Motor comes in White only

651006 • Base Charge for up to 48" (4')

651009 • Per foot after first 48"

Holds up to 100# of Fabric

**Forest**<sup>®</sup>  
*Eco Shuttle*

Decorative Motorized rods use 1 1/8" motorized track, which comes in both Metro (excluding the Soft Brass finish) and painted finishes, and can be used with any of our iron or crystal finials.

### Decorative Motorized FMS Track Assembly - Eco-Shuttle HD Motor

Motor comes in White & Black

651007-25 • Base Charge for up to 48" (4') • White

651008-59 • Base Charge for up to 48" (4') • Black

651009 • Per foot after first 48"

Holds up to 160# of Fabric

**Forest**<sup>®</sup>  
*Eco Shuttle HD*

Unlike our FMS track, our 1 1/8" decorative rod cannot be bowed or bent. We also do not offer splicing on the 1 1/8" rods. Keep both of these facts in mind when deciding between a decorative and non-decorative treatment.

### Decorative Motorized FMS Track Assembly - Z-Wave Motor

Motor comes in White only

651012 • Base Charge for up to 48" (4')

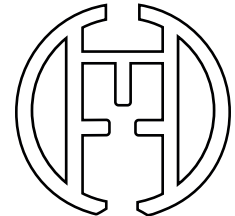
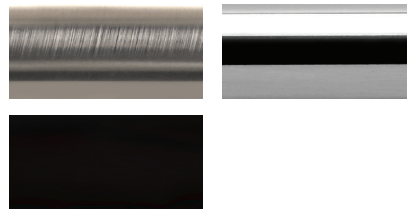
651009 • Per foot after first 48"

Holds up to 160# of Fabric

**Forest**<sup>®</sup>  
*Z-Wave Shuttle*

# MOTORIZED TRACK & À LA CARTE COMPONENTS

## TRACK RODS

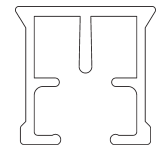


Actual Size

### 1 1/8" Decorative Motorized Rod

Shown in Brushed Nickel

65-B809-28 • 36" (Heavy) & 48" (Light) Bracket to Bracket Maximum



Actual Size

### Motorized FMS Track

Available in White & Black

65-51323 (-25, -59) • 24" (Heavy) & 36" (Light) Bracket to Bracket Maximum



### Motorized FMS Track Splice

Available in White & Black

65-3903 (-25, -59)

Use to connect spliced track

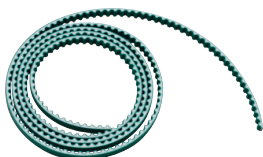
### Bracket to Bracket Maximum

The Bracket to Bracket maximum is the maximum distance in inches between brackets before an additional bracket must be added to avoid unwanted bowing or sagging. The maximum depends on the weight of the treatment fabric and the rod diameter. Some rods have the same maximum regardless of fabric weight.

**Light Treatments** include unlined, sheer, and lightweight fabric

**Heavy Treatments** include lined, blackout, or upholstery fabric

## TRANSPORT BELTS



### Transport Belt

65-9012 • Per Foot  
For all Motorization

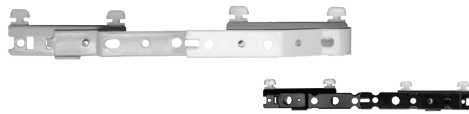


### Transport Belt Connector

Available in White & Black  
65-52512 (-25, -59)  
For all Motorization



## MASTER CARRIERS



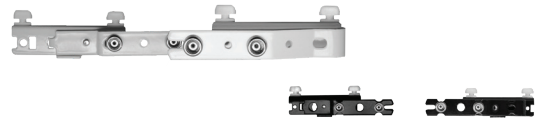
### Belt Master Carrier w/ Glides

Available in White & Black

65-52508 (-25, -59) • ROL

65-52509 (-25, -59) • LUL

For standard traverse



### Belt Master Carrier w/ Glides & 2 Snaps

Available in White & Black

65-52508 (-25a, -59a) • ROL

65-52509 (-25a, -59a) • LUL

For Ripplefold traverse



### Belt Buttmaster Carrier w/ Glides & 3 Snaps

Available in White & Black

65-52409 (-25, -59) • Right Butt

65-52410 (-25, -59) • Left Butt

For Ripplefold traverse

## CARRIERS



### Slim Line Contract Klick Carrier

Available in White & Black

65-52008 (-25, -59)

For standard traverse

Works best with FMS track



### Motorized Ball-Bearing Carrier

Available in White only

65-52009-25

For standard traverse

Works for both FMS track and 1 1/8" traverse rods



### Motorized Connected Snap Carrier w/ Glides

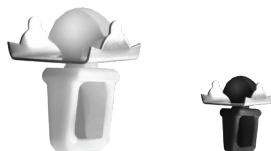
Available in White & Black

Available in 60%, 80%, 100%

& 120% Fullness

For Ripplefold traverse

## MISCELLANEOUS



### Twist-on End-Stop

Available in White & Black

65-2305 (-25, -59)

For Decorative Motorization



### Master Carrier Extension Arm

Available in White only

65-2552-25 • 6" Long

## PULLEYS



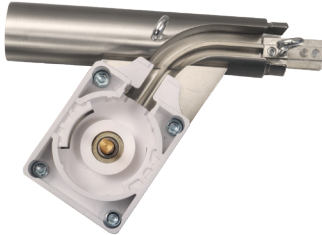
### Non-Decorative Motor Pulley

Available in White & Black  
65-52903 (-25,-59)  
For Non-Decorative Motorization



### Non-Decorative Return Pulley

Available in White & Black  
65-52910 (-25,-59)  
For Non-Decorative Motorization



### Decorative Motor Pulley

Available in plated finishes  
65-B11679-L • Left  
65-B11679-R • Right  
For Decorative Motorization



### Decorative Return Pulley

Available in plated finishes  
65-B11683-L • Left  
65-B11683-R • Right  
For Decorative Motorization

## REMOTES & WALL SWITCHES



### Diamond Remote

Available in White & Black  
65-52931 (-25, -59)  
6+1 Channels  
45' Range  
Holder included

All remotes and wall switches are battery powered. Remotes are included with an assembly but wall switches must be purchased separately.

Because the Z-Wave motor is meant to be integrated with Smarthubs and phone apps, it does not come with a remote. However, a remote can be ordered.



### Diamond Wall Switch

Available in White & Black  
65-52933 (-25, -59)  
2 Channels  
Works with all Forest Group systems



### RF Multi-Wall Switch

Available in White & Black  
65-52943 (-25, -59)  
16 Channels  
LED Screen  
Portable - Holder included.



# MOTORS & POWER SUPPLIES



## Eco-Shuttle Motor

Available in White only  
65-52939-25

## Eco-Shuttle HD Motor

Available in White & Black  
65-52925 (-25, -59)

## Z-Wave Motor

Available in White only  
65-52944-25

The following dimensions make up the Power Supply length listed below:

- Power Supply ( 9 ½")
- AC power cord (Variable length)
- DC connector cable (Variable length. Connects motor and power supply)



## 24V Power-Supply w/ Cord

Available in White only

- |             |              |                          |
|-------------|--------------|--------------------------|
| 65-52940-25 | • 7' Long    | • For Eco-Shuttle        |
| 65-52928-25 | • 7' 6" Long | • For Eco-Shuttle/Z-Wave |
| 65-52934-25 | • 16' Long   | • For Eco-Shuttle/Z-Wave |

	Eco Shuttle HD (M)	Eco Shuttle (S)	Z-Wave Shuttle
<b>DIMENSIONS</b>	Motor: 2.76" x 1.97" x 7.5" / Receiver Internal	Motor: 2.76" x 1.97" x 7.5" / Receiver Internal	Motor: 2.76" x 1.97" x 7.5" / Receiver Internal
<b>MOUNTING</b>	Wall or Ceiling; Can be spliced	Wall or Ceiling; Can be spliced	Wall or Ceiling; Can be spliced
<b>MAXIMUM WEIGHT</b>	160 lbs per motor / 120 lbs per motor - curved track	100 lbs per motor / 90 lbs per motor - curved track	160 lbs per motor / 120 lbs per motor - curved track
<b>TRAVEL SPEED</b>	5.5" per second standard / 7" per sec maximum	5.5" per second standard / 7" per sec maximum	5.5" per second standard / 7" per sec maximum
<b>RECEIVER</b>	Internal	Internal	Internal
<b>AMPERAGE</b>	.6 amps / 70 watts / 110 volt plug-n-play	.35 amps / 40 watts / 110 volt plug-n-play	.6 amps / 70 watts / 110 volt plug-n-play
<b>TORQUE</b>	1.5 Nm	1.0 Nm	1.5 Nm
<b>NOISE LEVEL</b>	< 40 dB(A)	< 40 dB(A)	< 40 dB(A)
<b>TOUCH IMPULSE TECHNOLOGY</b>	✓	✓	✓
<b>EMERGENCY CONTROL</b>	✓		✓
<b>RF COMMUNICATION STANDARD</b>	✓	w/ dry contacts ✓	✓
<b>Z-WAVE COMMUNICATION</b>		✓	✓
<b>AUTOMATION SYSTEM COMPATIBLE</b>	w/ dry contacts ✓	w/ dry contacts ✓	
<b>10-YEAR WARRANTY</b>	✓	✓	✓

# BRACKETS & END-CAPS

## NON-DECORATIVE



### Smart Klick Ceiling Bracket

Available in White & Black  
65-3003 (-25, -59)  
For FMS Track



### 3" Smart Klick Wall Bracket

Available in White & Black  
65-53202 (-25, -59)  
For FMS Track



### 6" Smart Klick Double Wall Bracket

Available in White & Black  
65-53206 (-25, -59)  
For FMS Track



### 3" Wood Rod Traverse Wall Bracket

Available in White & Black  
65-3280 (-25, -59)  
For FMS Track w/ Wood Fascia



### 6" Wood Rod Traverse Double Wall Bracket

Available in White & Black  
65-3281 (-25, -59)  
For FMS Track w/ Wood Fascia

#### Want to match your brackets to your wood fascia?

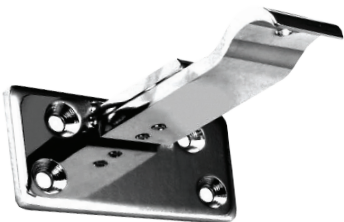
We can paint our 3" and 6" Wood Rod Traverse brackets in one of our finishes available in both lines, or use a simple finish (like Coal and Earth) to compliment your chosen wood finish.

## DECORATIVE



### 1 1/8" Vertical Adjustable Motorized Bracket

Available in plated finishes  
600312 • 3 5/8" - 4 5/8" Return  
For use with Decorative Motorized Rods  
Included in motorized assemblies without an upcharge



### 1 1/8" Horizontal Adjustable Motorized Bracket

Available in plated finishes  
600313 • 3 5/8" - 4 5/8" Return  
For use with Decorative Motorized Rods  
Included in motorized assemblies without an upcharge



### 1 1/8" Flush Ceiling Motorized Bracket

65-B11592-00 • 1/8" Light Gap  
For use with Decorative Motorized Rods\*



### 1 1/8" Single Motorized Bracket

Available in plated finishes  
65-B11670-120 • 3 1/8" Return  
For use with Decorative Motorized Rods\*



### 1 1/8" Double Motorized Bracket

Available in plated finishes  
65-B11672-220 • 3 1/4" & 7 1/4" Return  
For use with Decorative Motorized Rods\*



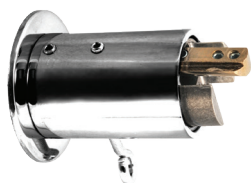
### 1 1/8" Drop Ceiling Motorized Bracket

Available in plated finishes  
65-B11873-50 • 2" Drop  
For use with Decorative Motorized Rods\*



### 1 1/8" Ceiling Motorized Bracket Extension

Available in plated finishes  
65-B11873-15 • 5/8" Extension  
Use on 1 1/8" Ceiling Traverse Bracket\*



### 1 1/8" Recessed Bracket w/ Return Pulley

Available in plated finishes  
65-B11682  
Use in place of return pulley in Decorative Motorized Rods\*

\* Upcharge applied when used with an assembly.



# ACKNOWLEDGEMENTS

- CATHY GREEN INTERIORS** • 53  
Owner: Cathy Green  
Website: [www.cathygreeninteriors.com](http://www.cathygreeninteriors.com)
- DESIGNS BY DIAN** • 47  
Owner: Dian Garbarini  
Website: [www.designsbydian.com](http://www.designsbydian.com)
- DETTAGLIO** • 12, 62, 112  
Owner: Jennifer Phillips  
Website: [dettagliodesign.com](http://dettagliodesign.com)
- THE ELEGANT WINDOW** • 93  
Owner: Karen Barnes  
Website: [elegantwindow.com](http://elegantwindow.com)
- ENVISION DESIGN SOLUTIONS** • 11  
Owner: Amy Schwab  
Website: [www.envision-az.com](http://www.envision-az.com)
- EVOLVE INTERIOR DESIGNS** • 21, 83  
Owner: Julie Hanssen  
Website: [evolveid.co](http://evolveid.co)
- FEATHERS FINE CUSTOM FURNISHINGS** • 42  
Owner: Dan Levinson  
Photographer: Mike Woodall  
Website: [feathersdesign.com](http://feathersdesign.com)
- FINISHING TOUCHES, INC.** • 101, 108, 117  
Owner: Sheri Stouffer  
Website: [finishingtouchesinc.com](http://finishingtouchesinc.com)
- FOREST DRAPERY HARDWARE** • 115  
Website: [www.forestgroup.com](http://www.forestgroup.com)

- IBD STUDIO** • **70**  
 Owner: Alisha Newman  
 Photographer: Joshua Caldwell  
 Website: [www.ibdstudio.net](http://www.ibdstudio.net)
- KANDRAC & KOLE INTERIOR DESIGNS** • **41, 50, 73, 84, 90**  
 Owner: Joann Kandrac & Kelly Kole  
 Photographers: Jill Buckner (pg 41), Lauren Rubenstein (pg 86),  
 Emily Followill (pgs 50, 75, & 95)  
 Website: [kandrac-kole.com](http://kandrac-kole.com)
- LHL INC.** • **18**  
 Owner: Lissa Lee Hickman  
 Website: [www.lissaleehickman.com](http://www.lissaleehickman.com)
- SHADOWMAKER** • **56**  
 Owner: Ben Comstock  
 Website: [www.theshadowmaker.com](http://www.theshadowmaker.com)
- PRETTY PRETTY PLEASE DESIGNS** • **102**  
 Owner: Sarah Woodson  
 Website: [prettyprettypleasedesigns.com](http://prettyprettypleasedesigns.com)
- RAINEY RICHARDSON INTERIORS** • **61**  
 Owner: Rainey Richardson  
 Photographer: Kenny Braun  
 Website: [www.raineyrichardson.com](http://www.raineyrichardson.com)

We want to thank everyone who graciously allowed us to use their gorgeous photos, including those whose photos we were unable to use due to printing limitations. We have amazing clients and love to show off their work.

For those interested, we are always looking for photos to show off in our gallery at [www.helserbrothers.com](http://www.helserbrothers.com). You can also tag us in your Instagram or Facebook photos using #helserbrothers or enter our Window Treats giveaways to win some great prizes!

.....

**H**ELSER **B**ROTHERS **I**NC.

[www.helserbrothers.com](http://www.helserbrothers.com)

**M:** 480.497.8191

3294 North Nevada Street | Chandler, AZ | 85225-1124